

PARTS MANUAL

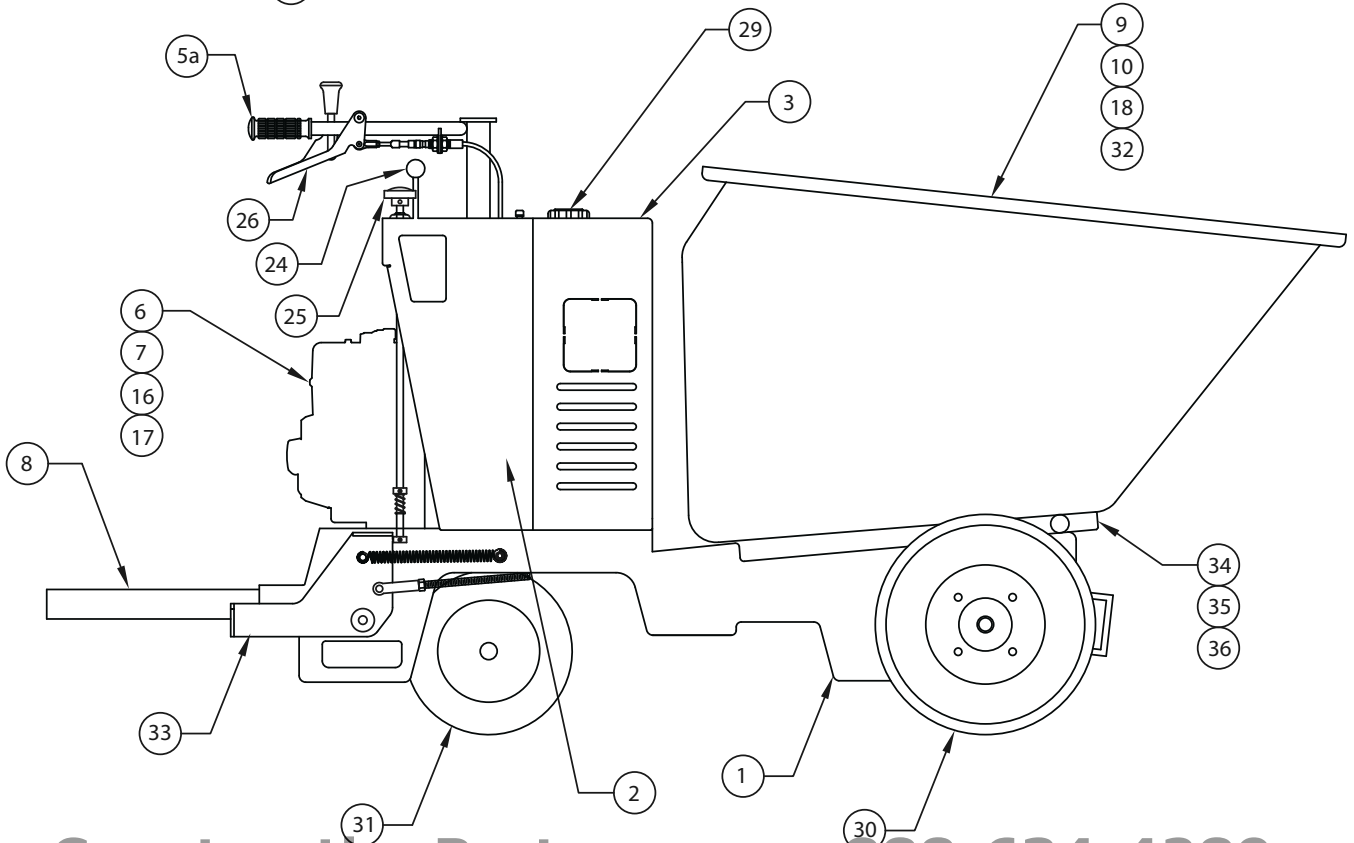
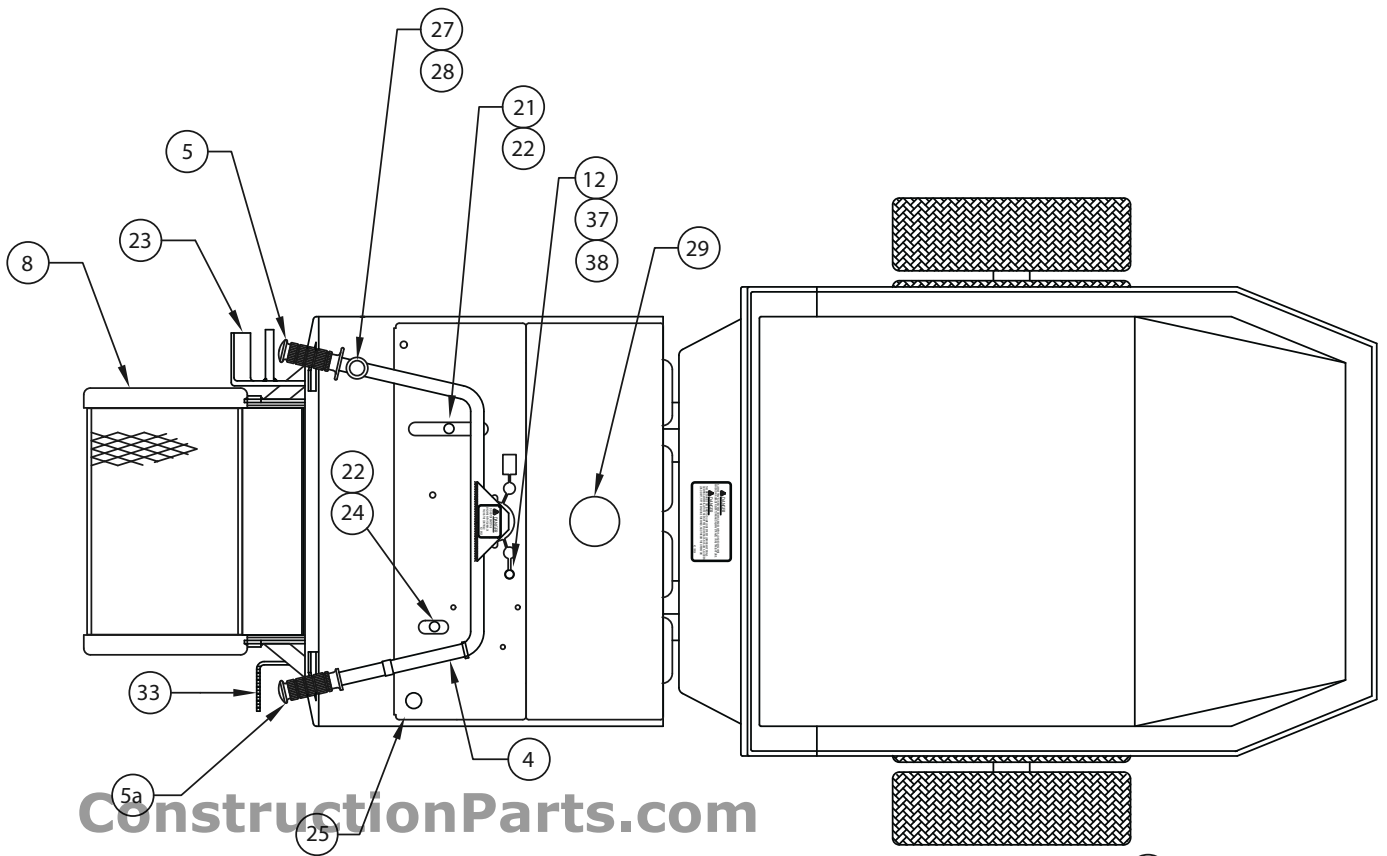
B-16, B-21, and TB-16 Scoot-Crete Power Buggies

(Revised April, 2009)



GENERAL ARRANGEMENT

ConstructionParts.com 888-634-4289

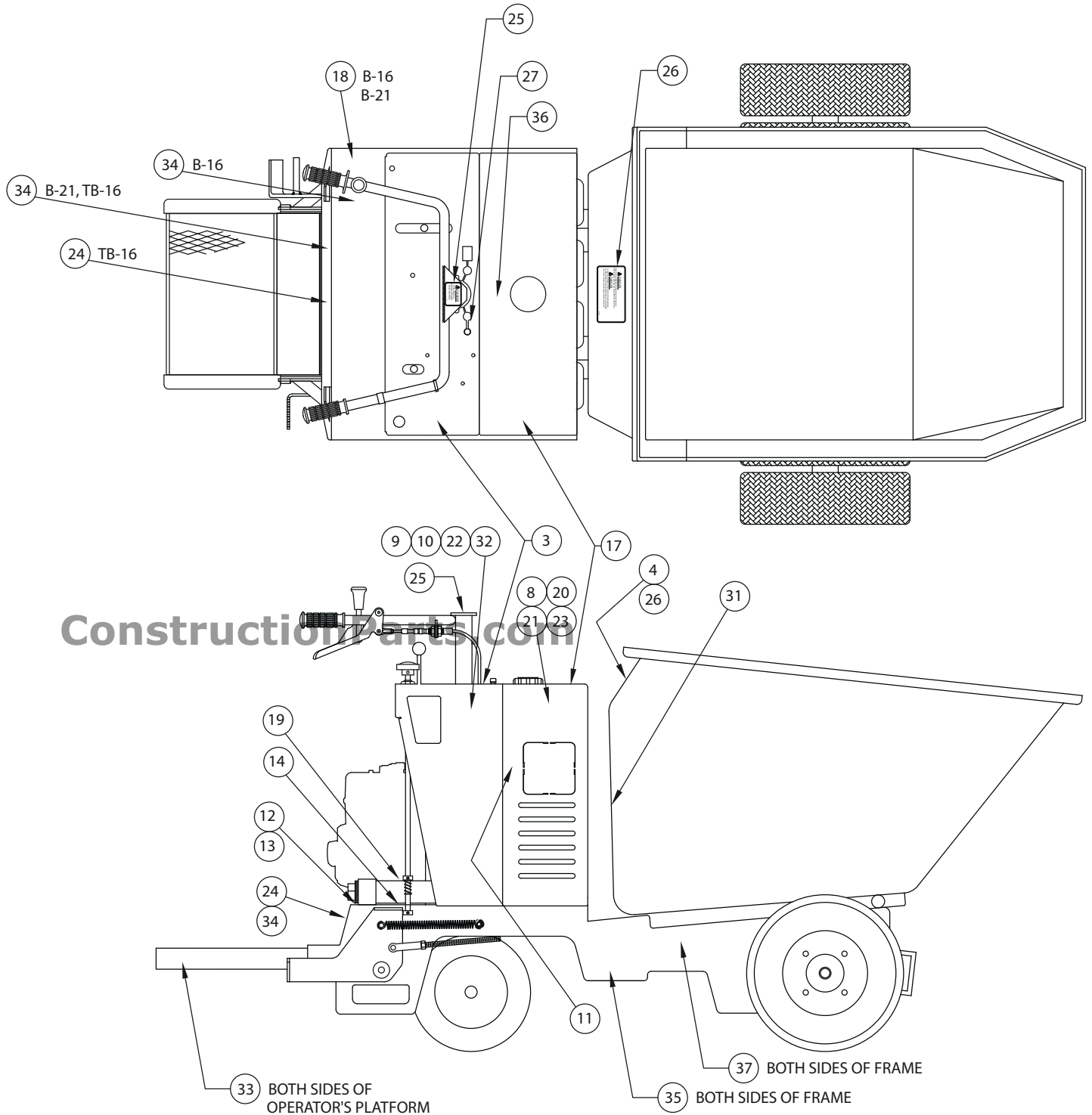


ConstructionParts.com 888-634-4289

GENERAL ARRANGEMENT PARTS LISTING

ConstructionParts.com **888-634-4289**

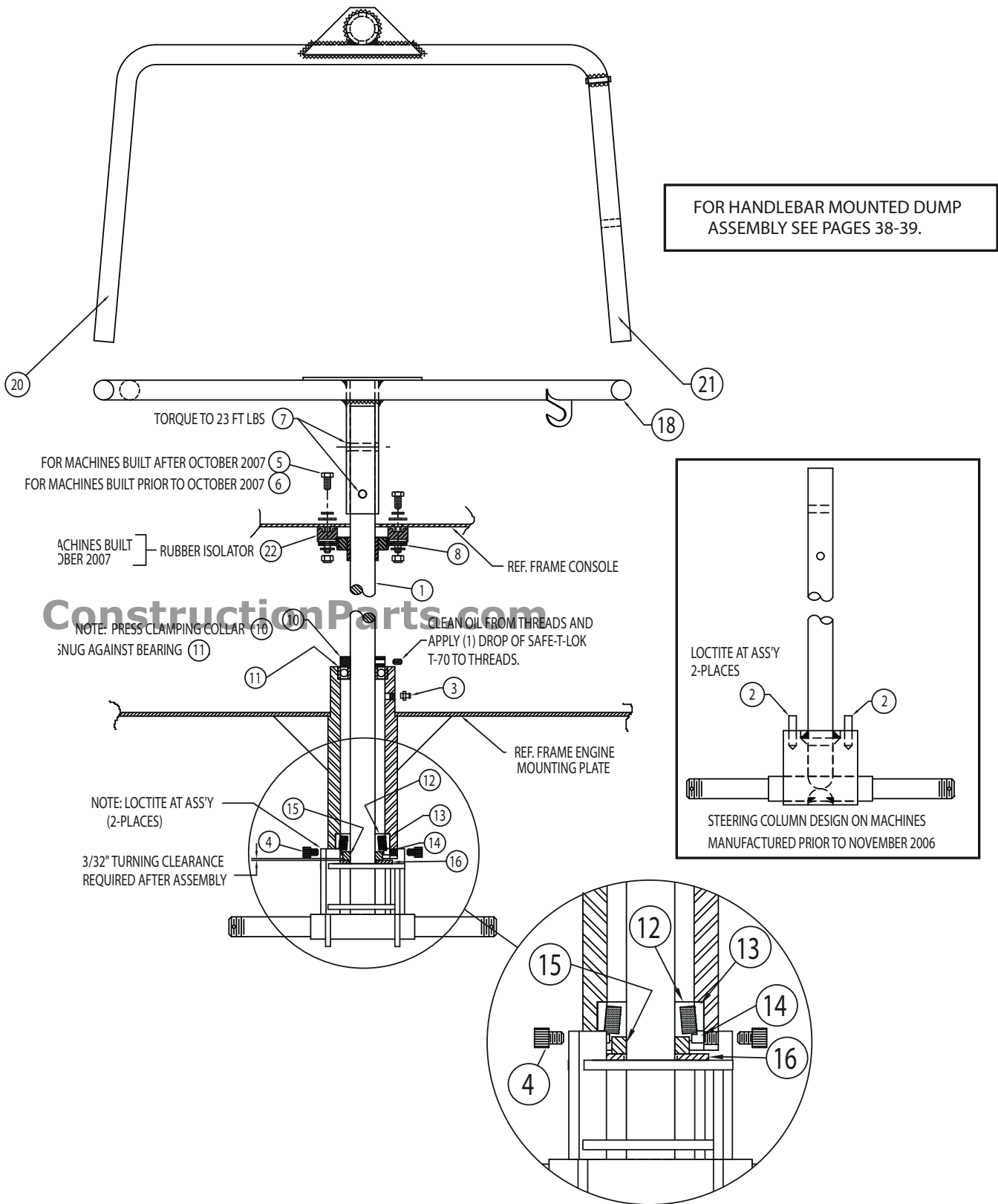
ITEM	QTY	PART #	DESCRIPTION
1	1	42100-36	Main Frame
2	1	42100-38	Console
3	1	42108-01	Hydraulic Reservoir Cover
4	1	42126-01	Standard Handle Bar Less Grips
5	1	42102-07	LH Handle Bar Grip
5a	1	42102-08	RH Handle Bar Grip with Trimmed Flange
6	1	EN0600	13HP Honda Recoil Start Engine
7	1	EN1700	13HP Honda Electric Start Engine
8	1	42115-01	Operator's Platform
9	1	42106-03	16 Cubic Foot Poly Bucket – B16 / TB16
10	1	42105-01	16 Cubic Foot Steel Bucket –B16 / TB16
12	1	EM0100	Stop Switch (for machines prior to Serial #G-16596)
16	1	42124-01	18 HP Honda Electric Start Engine – MB21 Discontinued
17	1	45320-09	20 HP Honda Electric Start Engine for B21 and TB16
18	1	42122-01	21 Cubic Foot Poly Bucket – B21
21	1	42117-02	Dump Lever
22	1	MS2100	Ball Knob
23	1	42117-17	Foot Operated Dump Pedal
24	1	42103-65	Handle for Directional Control Valve
25	1	42101-71	Parking Brake Knob
26	1	42107-25	Speed Control Lever
27	1	42126-18	Handlebar Mounted Bucket Dump Handle
28	1	42126-21	Knob for Handlebar Mounted Dump
29	1	FI0350	Hydraulic Oil Reservoir Breather/Dipstick
30	4	42113-20	Foam Filled Drive Tire with Wheel
31	2	42113-21	Foam Filled Steering Tire with Wheel
32	1	42121-08	21 Cubic Foot Steel Bucket – B21
33	1	42101-44	Brake Pedal
34	1	42110-02	Bucket Base Plate
35	1	42110-11	Pivot Pin for Bucket Base Plate
36	1	42110-16	Clamp Collar for Bucket Base Plate
37	1	45049-25	Emergency Stop Switch for Recoil Start (for machines built after to Serial #G-16595)
38	1	45043-04	Emergency Stop Switch for Electric Start (for machines built after to Serial #G-16595)



B-16 / B-21/TB-16 DECAL PARTS LISTING
ConstructionParts.com 888-634-4289

ITEM	QTY	PART#	DESCRIPTION
1	1	42109-32	Complete Decal Set for "B-16 Concrete Bomber"
2	1	42109-33	Complete Decal Set for "B-21 Concrete Bomber"
3	1	42109-01	Dash Decal. Located on Top of Console
4	1	DE1800	Lifting/Tie Down Safety Decal (located on Rear face of Bucket)
5*	1	42109	Complete Decal Set for MB-16 and MB-21.
8*	2	DE1400	"MILLER SCOOT-CRETE" Decal
9*	2	42109-09	"MB-16" Decal.
10*	2	42109-10	"MB-21" Decal.
11	1	42109-11	Flammable Fuel Safety Decal for B-21,MB-21, TB-16, MTB-16
12	1	42109-12	Mine-X Purifier/Muffler Safety Decal.
13	1	42109-13	ASME Safety Decal
14	1	42109-14	Fan Caution
17	1	42109-17	Safety Decal.
18	1	42109-18	Lifting/Tie Down Safety Decal.
19	1	42109-19	Manual Location in Holding Tube Decal
20	2	DE2400	B-16 "Concrete Bomber" Decal with Star and Stripes
21	2	DE2500	B-21 "Concrete Bomber" Decal with Star and Stripes
22	2	42109-21	"MTB-16" Decal
23	2	42109-23	"HALF-TRACK" Decal
24	1	42109-24	Lifting/Tie Down Safety Decal.
25	1	42109-25	Operator Position Decal
26	1	42109-26	"DANGER" Travel Down Hill Instructions..... Decal
27	1	48200-05	"EMERGENCY STOP" Round Decal. Place over Dash Decal.
31	1	DE1100	Safety & Operating Instructions Decal (for Bucket only)
32	2	DE2600	Check Stripe Decal X 20" Long.
33	2	DE2700	Check Stripe Decal X 12" Long.
34	1	DE1700	Exhaust Gas Decal.
35	2	DE2800	Check Stripe Decal X 10" Long.
36	1	DE1900	Hydraulic Oil Decal (for machines with top louvered Hydraulic Reservoir Cover only)
37	2	DE2000	Pinch Point Safety Decal

* For machines prior to March 2008

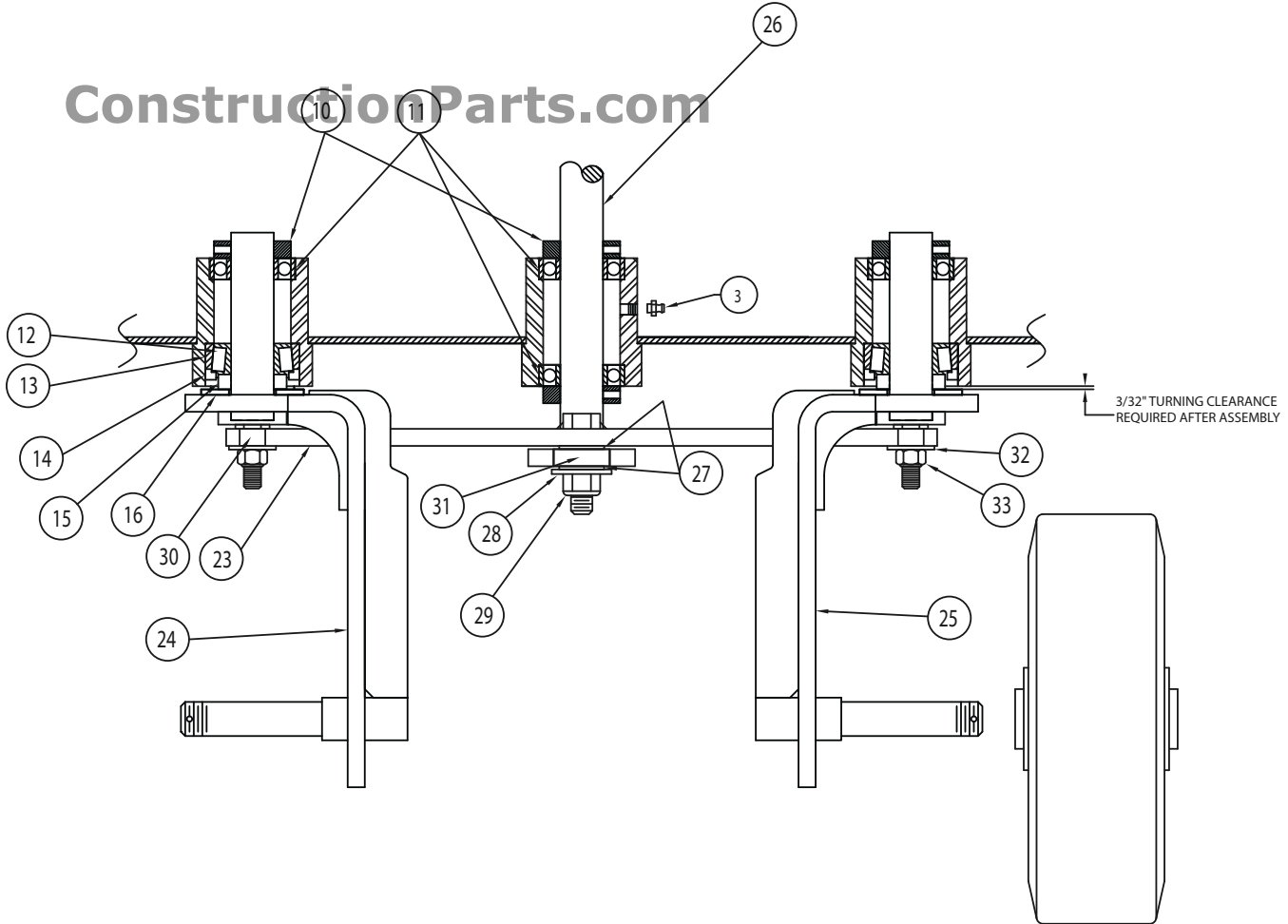
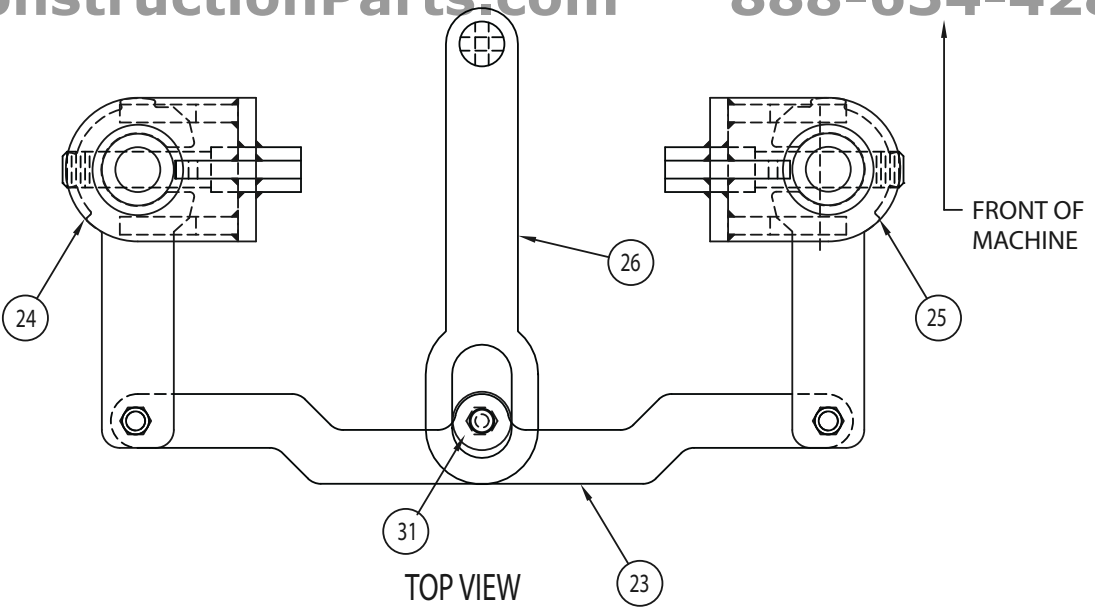


B-16 AND B-21 STEERING COLUMN PARTS LISTING

ConstructionParts.com **888-634-4289**

ITEM	QTY	PART#	DESCRIPTION
1	1	32100-01	Steering Column. Replaces all models, all years.
2	2	32100-05	Spring Pin. Used on all machines built prior to November 2006
3	1	42100-18	Grease Fitting
4	2	42100-17	Stop Bolt. 5/16"NC Socket Head Cap Screw X 3/8"LG. Grade 8
5	2	32100-22	Hex Head Cap Screw. 5/16"NC X 5/8"LG. with Flat Washer and Lock Washer and Lock Nut
6	2	32100-09	Hex Head Cap Screw. 3/8"NC X 1"LG. with two(2) Flat Washers and Lock Nut
7	2	42102-06	Hex Head Cap Screw. 3/8"NC X 2-1/4"LG. with Lock Nut
8	1	32100-08	Flanged Bearing
10	1	CO0100	Clamping Collar
11	1	BE1400	Ball Bearing
12	1	BE1200	Bearing Cone
13	1	BE1300	Bearing Cup
14	1	MS3700	Grease Seal
15	1	32100-15	Spacer
16	1	32100-16	Flat Washer
18	1	42126-01	Handlebar. Used on all machines built after March 2000
20	1	42102-07	Handlebar Grip, Untrimmed.
21	1	42102-08	Handlebar Grip, Trimmed.
22	2	32100-21	Stud Mounted Rubber Isolator

TB-16 HALF-TRACK STEERING COLUMN
ConstructionParts.com 888-634-4289



TB-16 HALF-TRACK STEERING COLUMN PARTS LISTING

ConstructionParts.com

888-634-4289

Refer to the Parts listing on page 9 for Steering Column Parts Common to all Models.

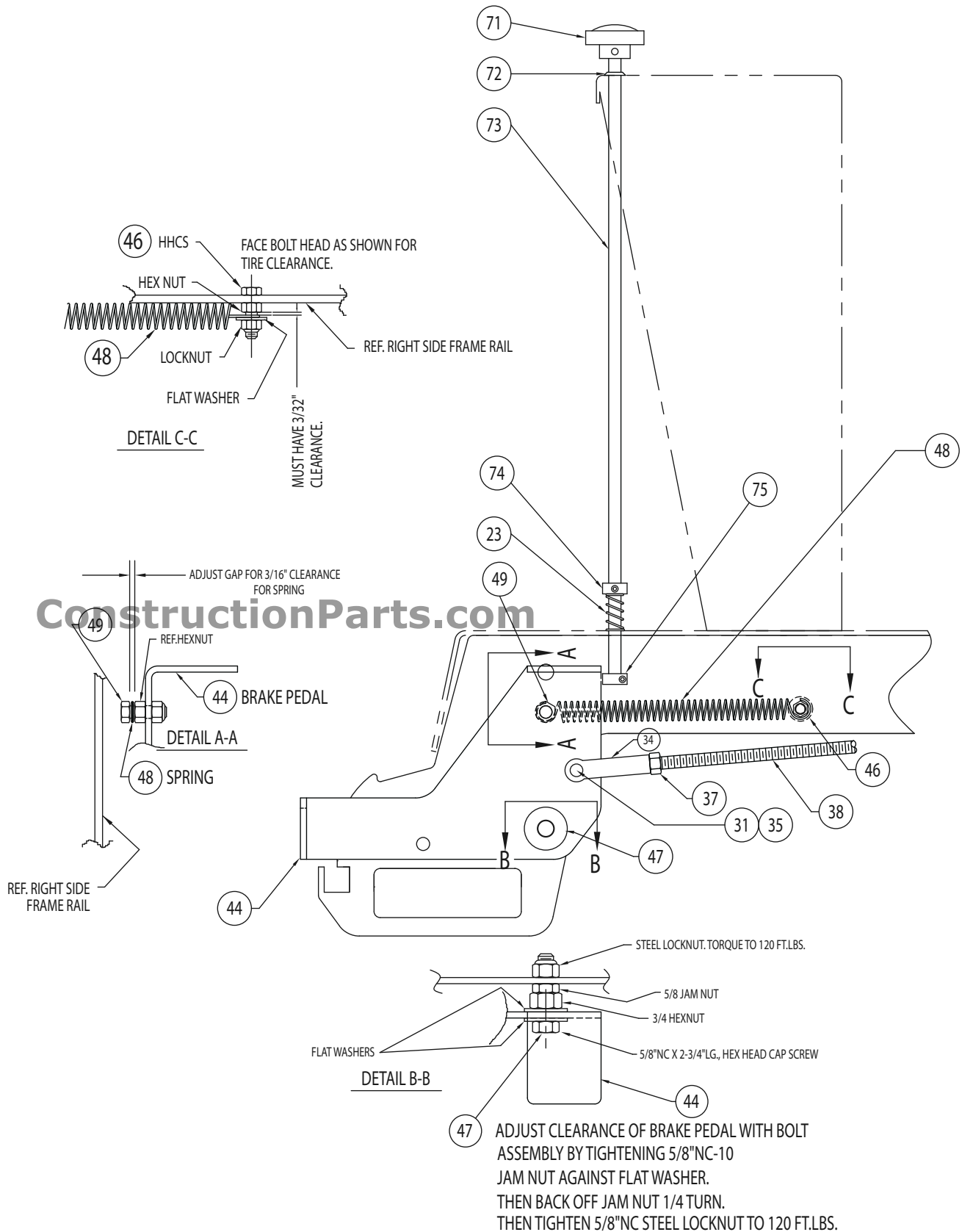
ITEM	QTY	PART#	DESCRIPTION
3	1	42100-18	Grease Fitting
10	4	CO0100	Clamping Collar
11	4	BE1400	Ball Bearing. 2-1/2" O.D. X 1-1/4" I.D.
12	2	BE1200	Bearing Cone
13	2	BE1300	Bearing Cup
14	2	MS3700	Grease Seal
15	2	32100-15	Spacer
16	2	32100-16	Flat Washer
23	1	42132-11	Tie Bar
24	1	42132-02	Left Wheel Fork
25	1	42132-03	Right Wheel Fork
26	1	42132-17	Steering Shaft
27	2	42132-16	5/8" SAE Flat Washer
28	1	42132-21	5/8" USS Flat Washer
29	1	42132-22	5/8"NC-10 Hex Locknut
30	2	42132-14	Flanged Type Bronze Bearing. 3/4" O.D. X 1/2" I.D.
31	1	42132-15	Ball Bearing. 1-5/8" O.D. X 5/8" I.D.
32	2	42132-23	1/2" USS Flat Washer
33	2	42132-24	1/2"NC-13 Hex Locknut

ConstructionParts.com

888-634-4289

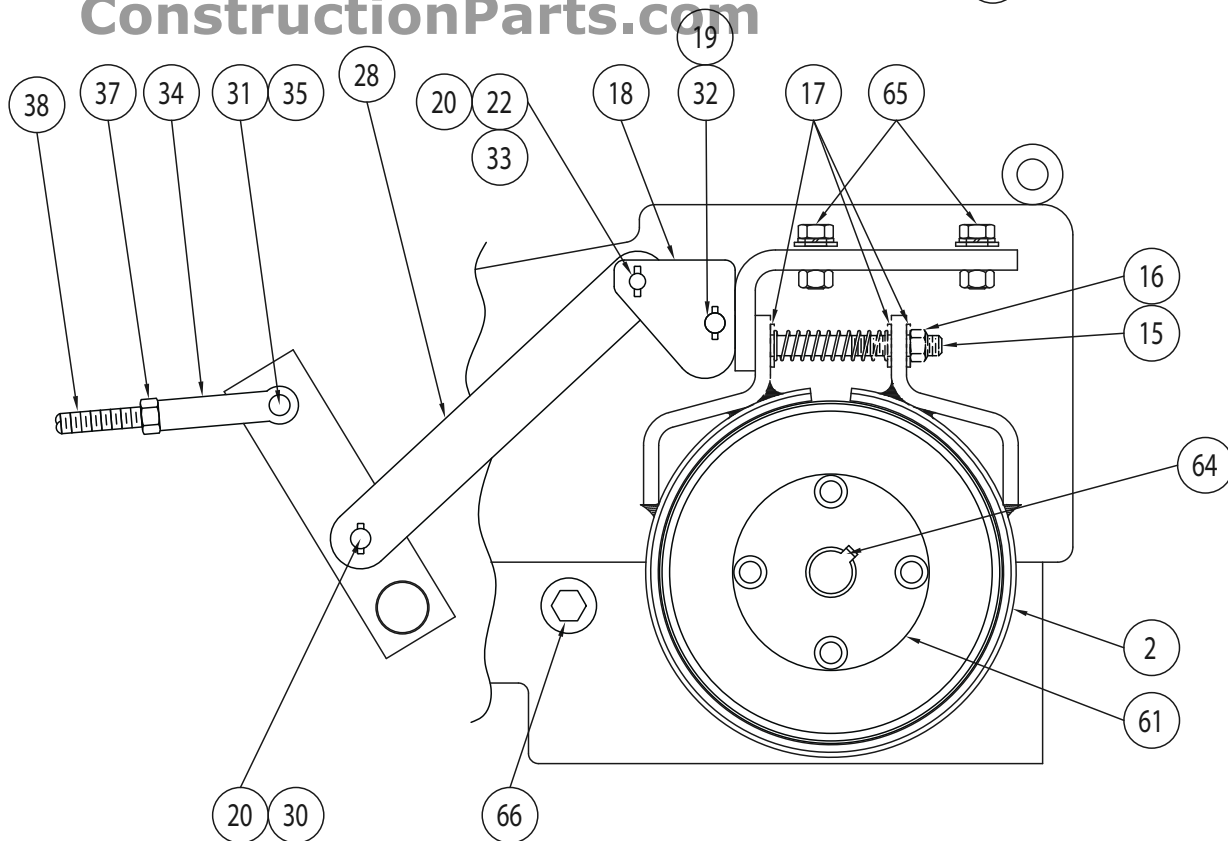
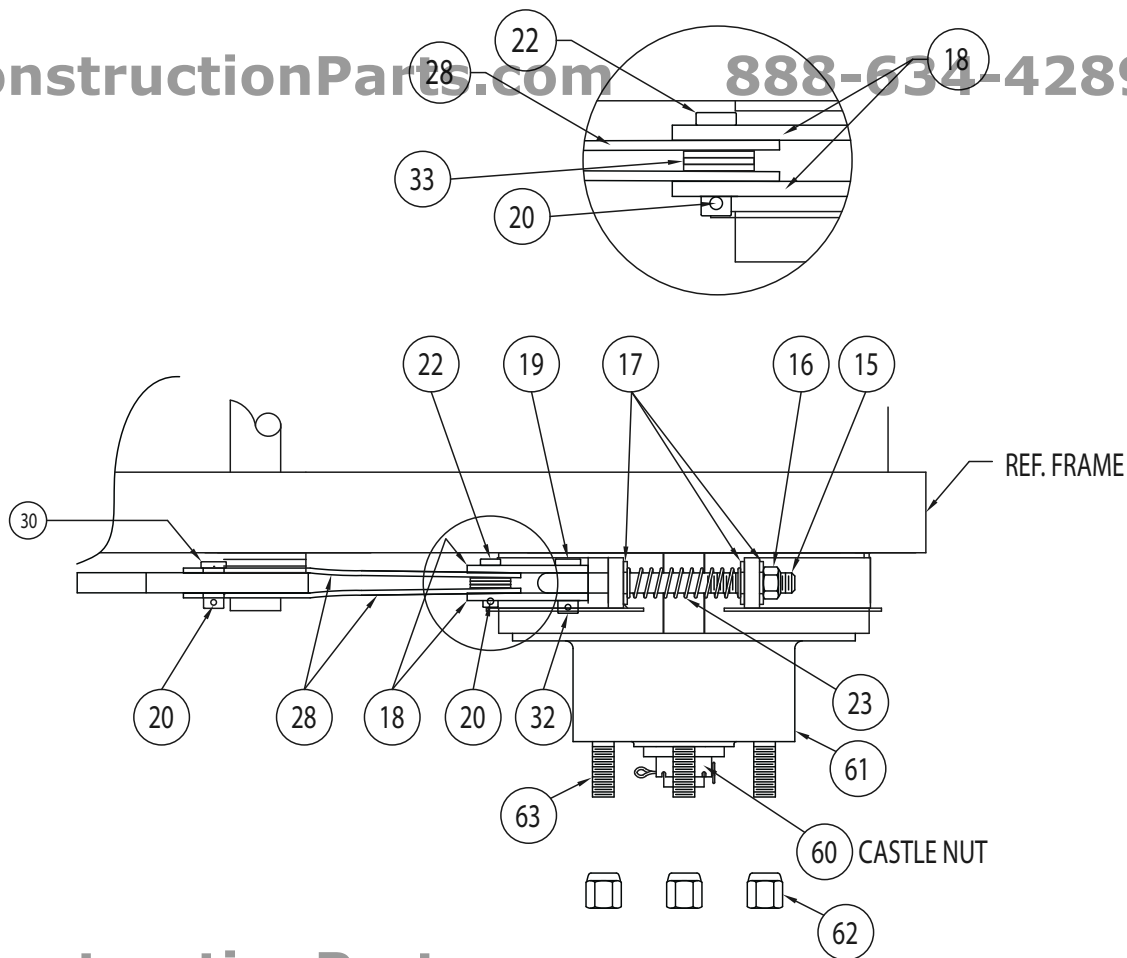
B-16 AND B-21 SERVICE AND PARKING BRAKE SYSTEM

Refer to page 14 for parts listing



ConstructionParts.com

888-634-4289

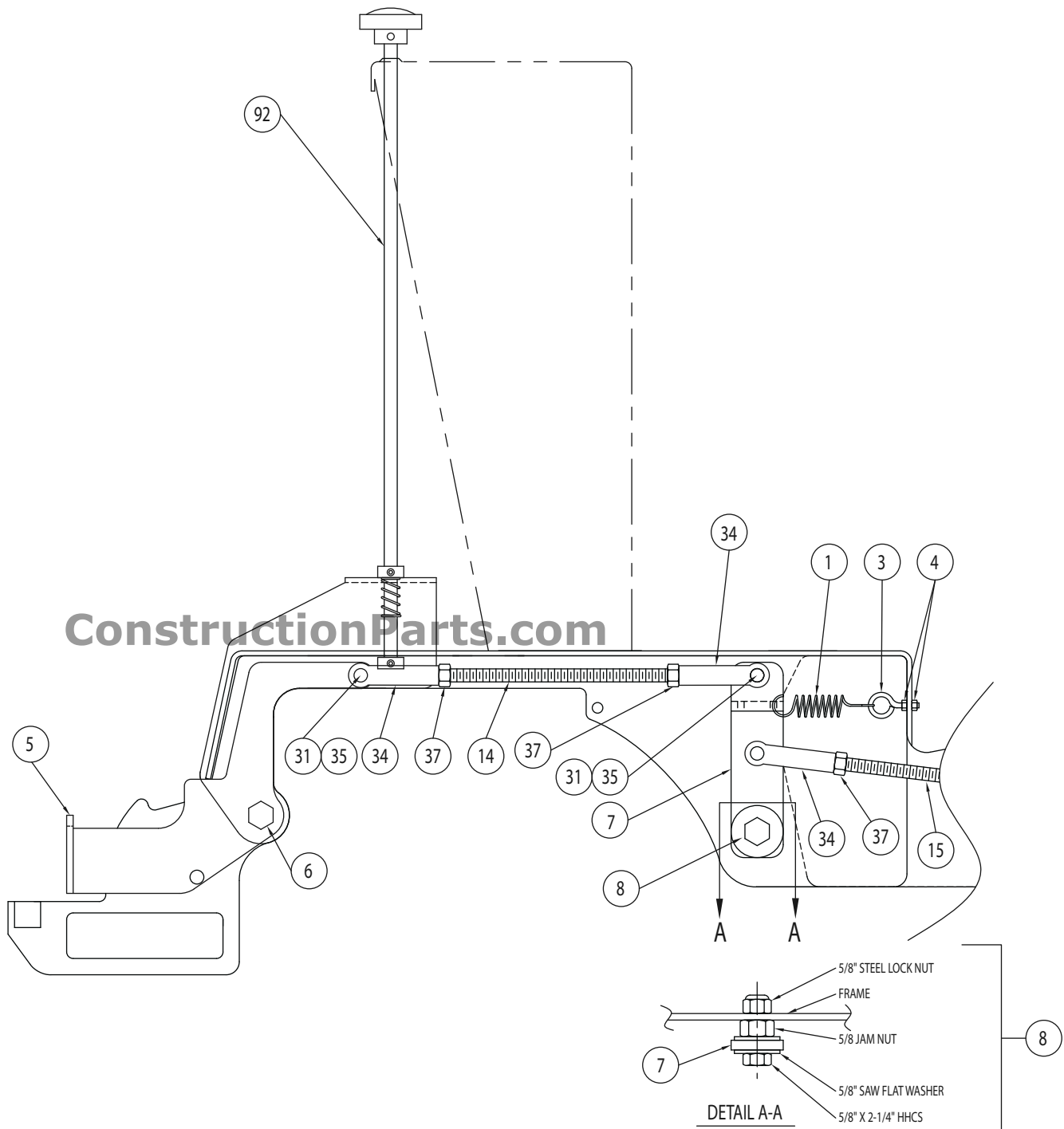


B-16 AND B-21 SERVICE AND PARKING BRAKE PARTS LISTING

ITEM	QTY	PART#	DESCRIPTION
2	2	42101-02	Brake Band
15	2	42101-15	"J" Bolt
16	2	42101-16	½" NC-13 Nylock Locknut, Grade 2/IFI-100/107 No Substitutes
17	6	42101-17	½" SAE Plated Flatwasher
18	4	42101-18	Brake Cam (replace in matched pairs only)
19	2	42101-19	Case Hardened Clevis Pin x 1-5/16" Overall Length. No Substitutes
20	4	42101-20	5/32" Diameter X ¾" Lg. Spring Pin. No Substitutes - Do not use cotter pin
22	2	42101-22	Clevis Pin x 1-1/8" Overall Length
23	3	SN0150	Compression Spring
28	4	42101-28	Brake Cam Link Arm
30	2	42101-30	Clevis Pin x .77" Overall Length
31	2	42101-31	⅛" x ¾" Cotter Pin
32	2	42101-32	3.5mm x 20mm Lg. Spring Pin. No Substitutes. Do not use cotter pin.
33	6	42101-33	5/16" USS Flat Washer
34	2	MS3900	Adjustable Yoke End
35	2	MS3800	Yoke Pin
37	2	42101-37	½" NC Hex Nut
38	1	42101-38	Brake Rod. Plated. All Thread SAE Grade 2 minimum. No substitutes
44	1	42101-44	Brake Pedal
46	1	42101-46	Bolt Assembly. ⅜" NC-16 x 1-½" Lg. HHCS with USS Flat Washer, Lock Nut, and Hex Nut.
47	1	42101-47	Bolt Assembly. 5/8" NC-10 x 2-3/4" Lg. HHCS with ¾" NC Hex Nut, 5/8" NC-10 Jam Nut, 5/8"NC-10 Steel Lock Nut, two(2) 5/8" SAE Flat Washers.
48	1	42101-48	Spring, Brake Pedal Return
49	1	42101-49	Bolt Assembly. ½" NC-13 x 1-½"Lg. HHCS with Lock Nut and Hex Nut.
60	2	42103-64	1"-20 Castle Nut for Hydraulic Wheel Motor
61	2	42101-61	Wheel Hub With Studs
62	16	42113-09	Cone Type Wheel Nut
63	8	42101-63	Wheel Studs Only for Wheel Hub, Item 61
64	2	42103-63	5/16" Square Key X 1" Lg. for Wheel Hub, Item 61
65	4	42101-64	Bolt Assembly. ½" NC-13 x 1-¼" Lg. HHCS with SAE Flat Washer and Lock Washer.
66	2	42101-65	Bolt Assembly. ½" NC-13 x 1-¼" HHCS with two (2) USS Flat Washers and Steel Lock Nut.
71	1	42101-71	Palm Grip
72	1	42101-72	Grommet
73	1	42101-73	Parking Brake Catch Rod
74	1	42101-74	Set Collar
75	1	42101-75	Clamping Collar

TB-16 (HALF TRACK) SERVICE AND PARKING BRAKE SYSTEM

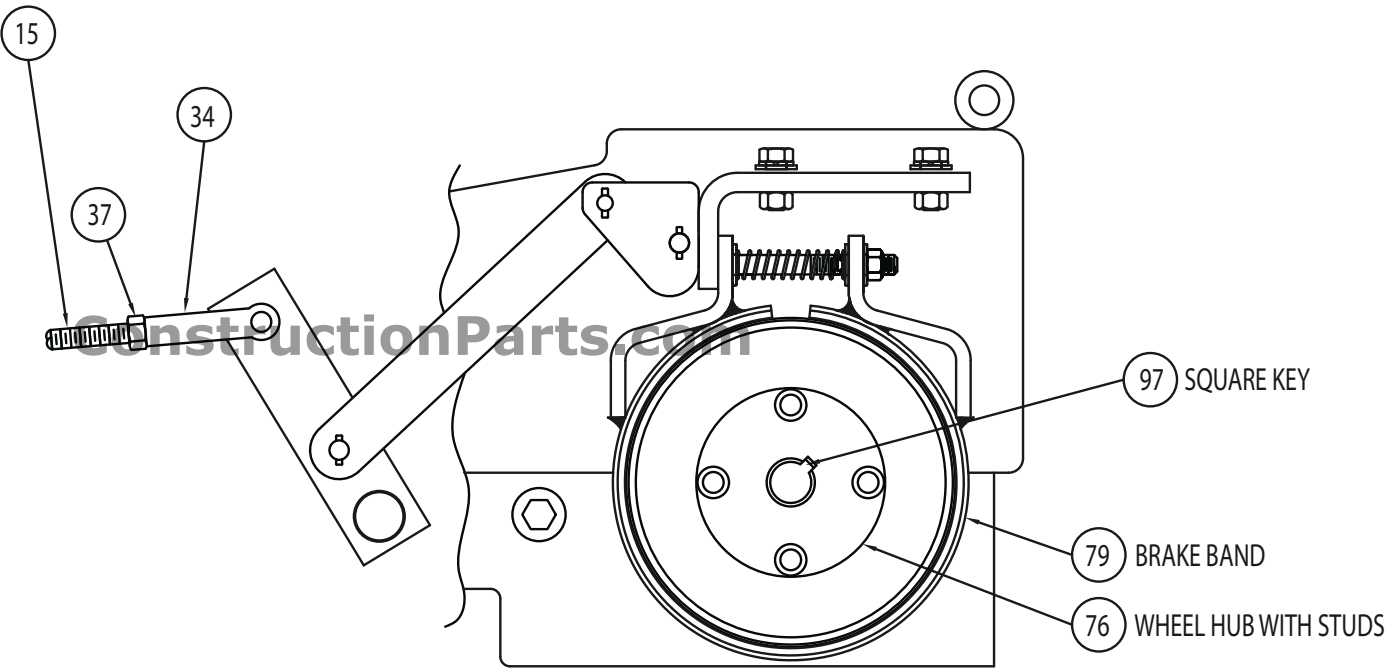
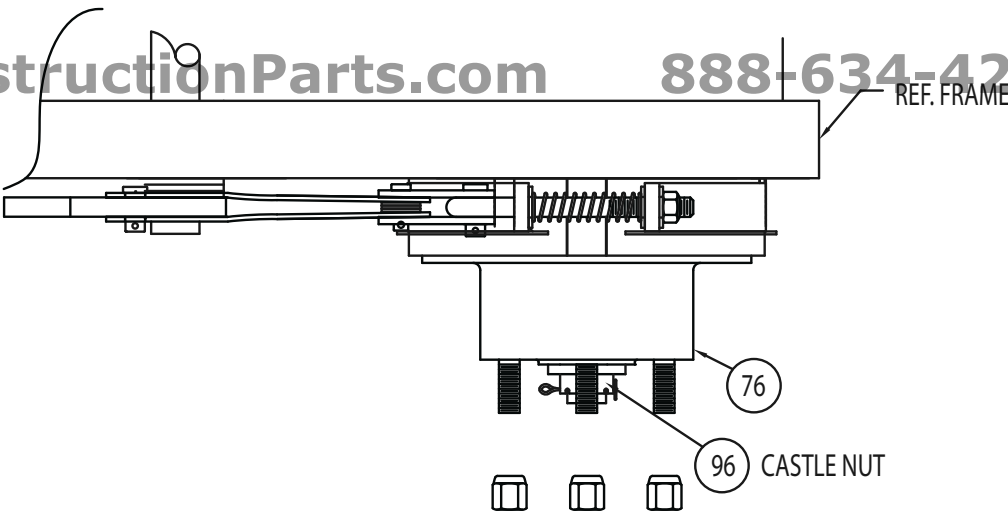
ConstructionParts.com Refer to page 18 for parts listing 888-634-4289



ADJUST CLEARANCE OF BRAKE PEDAL WITH BOLT
ASSEMBLY (8) BY TIGHTENING 5/8"NC-10
JAM NUT AGAINST FLAT WASHER.
THEN BACK OFF JAM NUT 1/4 TURN.
THEN TIGHTEN 5/8"NC STEEL LOCKNUT TO 120 FT.LBS.

ConstructionParts.com

888-634-4289



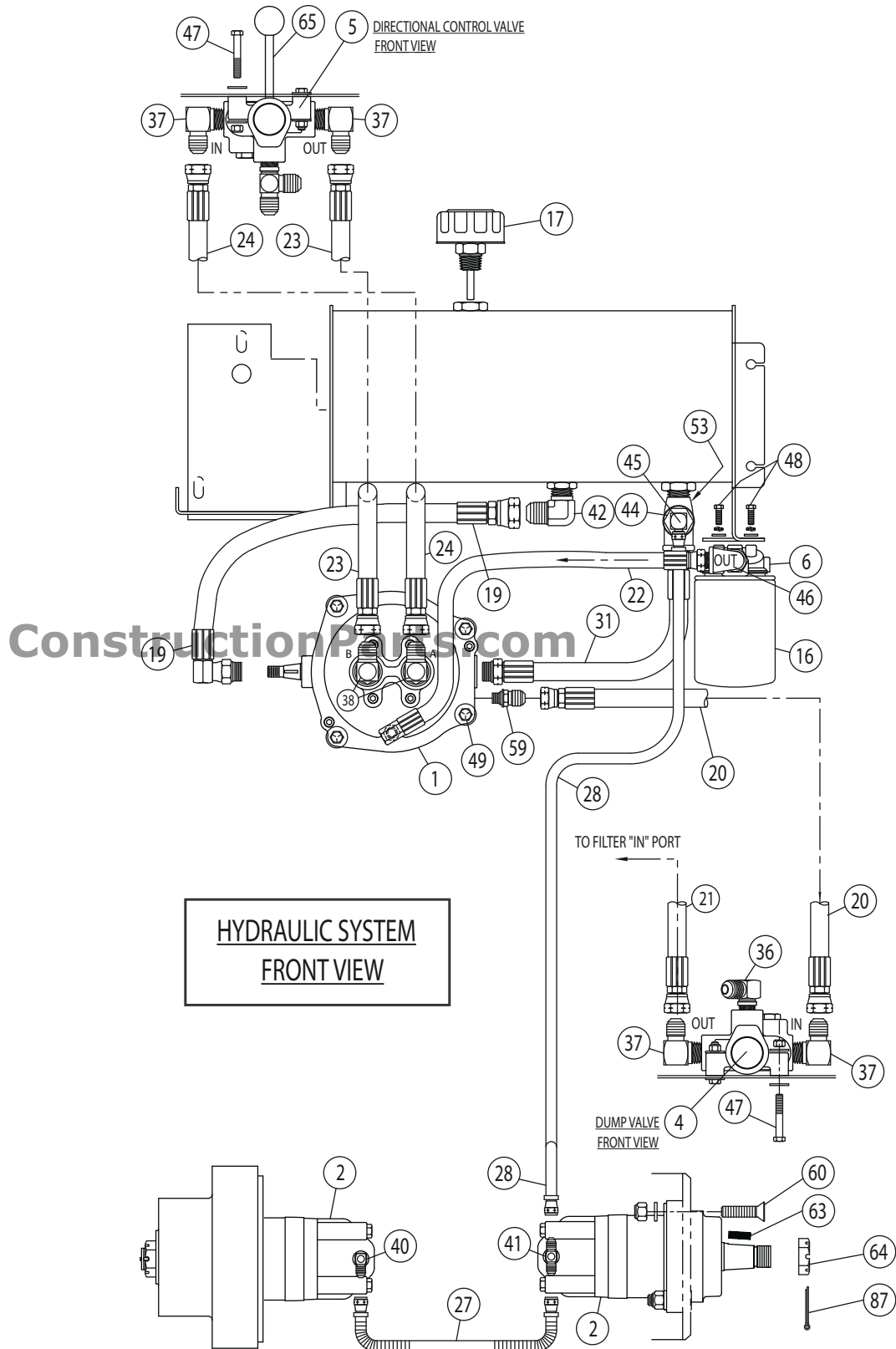
TB-16 HALFTRACK SERVICE AND PARKING BRAKE PARTS LISTING

ConstructionParts.com 888-634-4289

Refer to the Parts listing on page 14 for Brake Parts Common to all Models.

ITEM	QTY	PART#	DESCRIPTION
1	1	42133-17	Extension Spring
3	1	42133-18	Eye Bolt
4	2	42133-19	1/4" NC Plated Hex Nut
5	1	42133-02	Brake Pedal
6	1	42133-06	5/8" HHCS x 8" Long with two(2) SAE Flat Washers
7	1	42133-07	Brake Arm
8	1	42101-47	Bolt Assembly. 5/8"NC-10 x 2-3/4"Lg. HHCS with 3/4"NC Hex Nut, 5/8"NC-10 Jam Nut, 5/8"NC-10 Steel Lock Nut, two(2) 5/8" SAE Flat Washers
14	1	42133-14	1/2" NC All Thread x 11" Long, SAE Grade 2 Minimum
15	2	42133-15	1/2" NC All Thread x 14-1/8" Long, SAE Grade 2 Minimum
31	2	42101-31	1/8" x 3/4" Cotter Pin
34	4	MS3900	Adjustable Yoke End
35	4	MS3800	Yoke Pin
37	2	42101-37	1/2" NC Hex Nut
76	2	42101-76	Wheel Hub With Studs
79	2	42101-79	Brake Band
92	1	42101-92	Parking Brake Catch Rod x 23-7/16" Long
96	2	42101-96	1-1/4"-18 Castle Nut for Hydraulic Wheel Motor
97	2	42101-97	7/16" Square X 1-1/4" Long key for Wheel Hub, item 76

B-16 – B-21 HYDRAULIC SYSTEM
ConstructionParts.com 888-634-4289
HYDRAULIC SYSTEM GENERAL ARRANGEMENT (1 OF 3)
 refer to pages 23 & 24 for parts listing



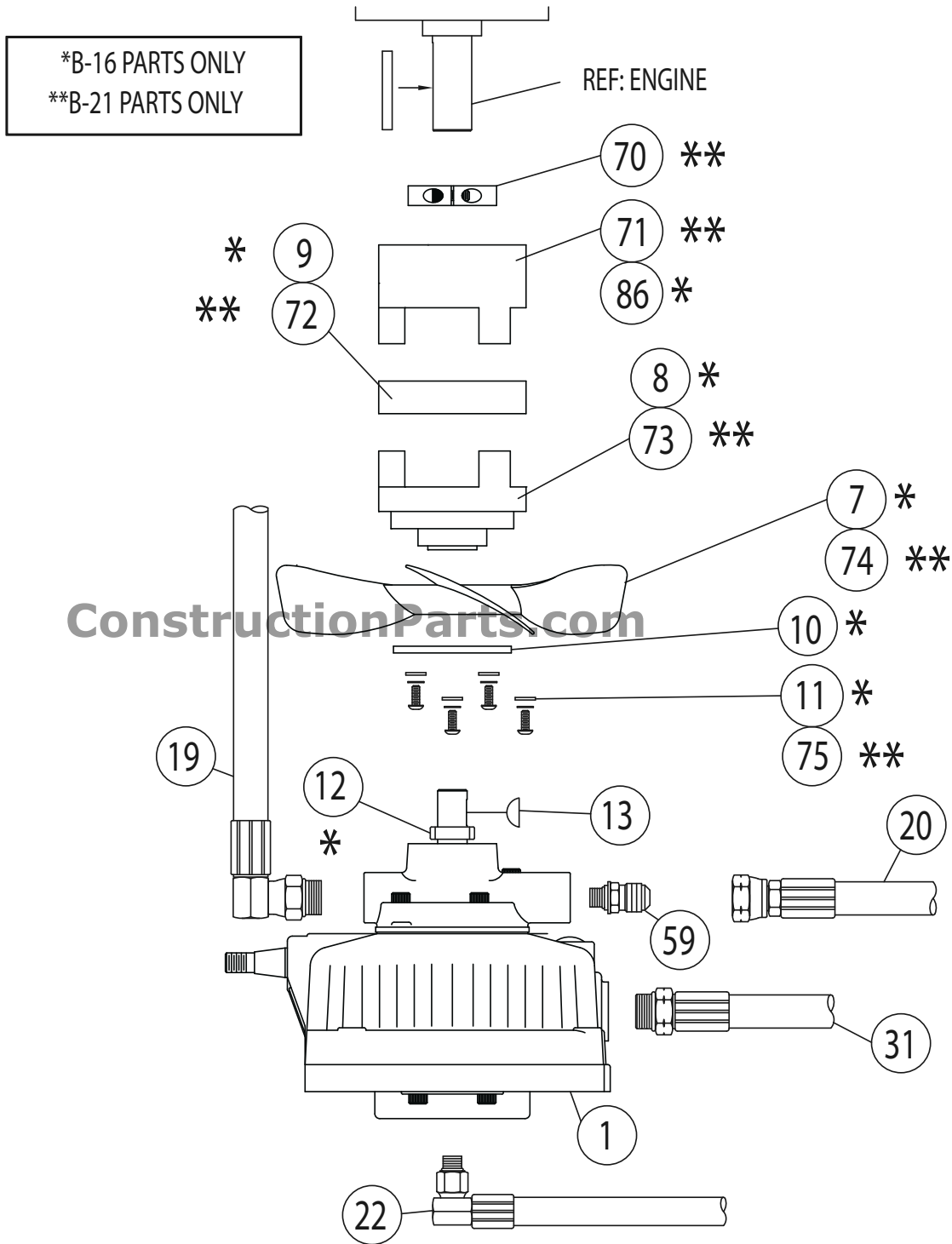
888-634-4289

refer to pages 23 & 24 for parts listing



B-16 – B-21 HYDRAULIC SYSTEM

ConstructionParts.com 888-634-4289
HYDRAULIC SYSTEM GENERAL ARRANGEMENT (3 OF 3)
 refer to pages 23 & 24 for parts listing



B-16 AND B-21 HYDRAULIC SYSTEM PARTS LISTING

ConstructionParts.com 888-634-4289

ITEM	QTY	PART #	DESCRIPTION
1	1	HM0500	Hydrostatic Pump
2	2	HM0600	Wheel Motor with 5/16" Square X 1" Lg. Key
*3	1	HM0700	Hydraulic Cylinder x 2" Diameter Bore. B-16
4	1	HM0800	Dump Valve
4A	1	42103-69	Dump Valve Assembly (consist of 4, 36, 37)
5	1	HM0900	Directional Control Valve
5A	1	42103-76	Directional Valve Assembly (consist of 5, 35, 37, 50, 54, 56)
6	1	FI0200	Spin-on Filter Assembly. Complete with Element
*7	1	42103-07	Transmission Fan
*8	1	42103-08	Pump Side Coupling Half.
*9	1	PM0150	Spider Jaw Element.
*10	1	42103-10	Flat washer.
*11	3	42103-11	Bolt Assembly. 1/4" NC HHCS x 3/4" Long with Lock washer. To attach Transmission Fan
*12	2	FG3400	Shaft Spacer.
13	1	42103-13	Woodruff Key (3/16" wide x 3/4" long)
16	1	42103-16	Spin-on Filter Element Only
17	1	FI0350	Reservoir Filler Breather Assembly
19	1	42103-19	Hose Assembly, 15" long
20	1	HH1700	Hose Assembly, 20" long
21	1	42103-21	Hose Assembly, 24" long
22	1	HH1800	Hose Assembly, 18" long
23	1	HH1900	Hose Assembly, 27" long
24	1	HH2000	Hose Assembly, 30" long
25	2	42103-25	Hose Assembly, 69" long
26	2	42103-26	Hose Assembly, 65" long
27	1	HH2100	Hose Assembly, 18" long w/spring guard
28	1	HH2200	Hose Assembly, 54" long w/spring guard
29	1	HH2300	Hose Assembly, 72" long w/spring guard
30	1	HH2400	Hose Assembly, 66" long w/spring guard
31	1	HH2500	Hose Assembly, 18" long
35	2	FG3800	Male Run Tee
36	2	FG3900	90° Male Elbow
37	4	FG3700	90° Male Elbow
38	2	FG4000	Straight Thread "O" Ring Elbow
40	1	FG4100	Straight Thread "O" Ring 90° Elbow
41	1	FG4200	Straight Thread "O" Ring Branch Tee
42	1	42103-42	90° Male Elbow
44	1	42103-44	Hex Reducer Bushing

*B-16 ONLY / **B-21 AND TB16 ONLY

B-16 AND B-21 HYDRAULIC SYSTEM PARTS LISTING (continued)

ConstructionParts.com

888-634-4289

ITEM	QTY	PART#	DESCRIPTION
45	1	FG4300	90° Male Elbow
46	2	42103-46	90° Street Elbow
47	6	42103-47	Bolt Assembly. 5/16" NC HHCS x 1-3/4" long with USS Flat Washer and Lock Nut
48	2	42103-48	Bolt Assembly. 1/4" NC HHCS x 3/4" long with Split Lock Washer and SAE Flat Washer
49	4	42103-49	Bolt Assembly. 3/8" NC HHCS x 2 1/2" with USS Flat Washer and NyLock Lock Nut)
50	1	42103-50	Straight Male Connector
53	1	42103-53	Fitting Male Run Street Tee
54	1	42103-54	Cap
55	2	FG3600	90° "O" Ring Elbow
56	1	42103-56	Male Branch Tee
59	1	42103-59	Straight Thread "O" Ring Connector
60	8	42103-60	Bolt Assembly. 1/2" NC Hex Socket Flat Head Cap Screw x 2" long with Split Lock Washer and NyLock Lock Nut. To attach Wheel Motor
63	2	42103-63	Wheel Motor Key. 5/16" Square x 1" long
64	2	42103-64	Wheel Motor Castle Nut. 1"-20 Threads per inch
65	1	42103-65	Valve Handle
**68	1	42123-23	Hydraulic Cylinder x 2-1/2" diameter bore.
**70	1	42303-16	Clamping Collar.
**71	1	42123-04	Engine Side Coupling Half.
**72	1	42123-06	Spider Jaw Element.
**73	1	42123-05	Pump Side Coupling Half.
**74	1	42123-01	Transmission Fan.
**75	4	42123-03	Bolt Assembly. B-21 #10-24 American Standard Hex Socket Button Head Cap Screw x 1/2" long with External Star Lock Washer and #10 Flat Washer. For Transmission Fan
77	4	42103-77	Flat Washer. 1" SAE Flat Washer
*86	1	PM0100	Engine Side Coupling Half.
87	2	42103-87	Wheel Motor Cotter Pin. 5/32" x 2" long Steel Plated Cotter Pin.

*B-16 ONLY / **B-21 AND TB16 ONLY

REPLACEMENT SEAL KITS

PART#	DESCRIPTION
42103-99	B-16 Lift Cylinder Seal Kit
100135	B-21 Lift Cylinder Seal Kit
42103-85	Directional Control Valve and Dump Valve Seal Kit

ConstructionParts.com

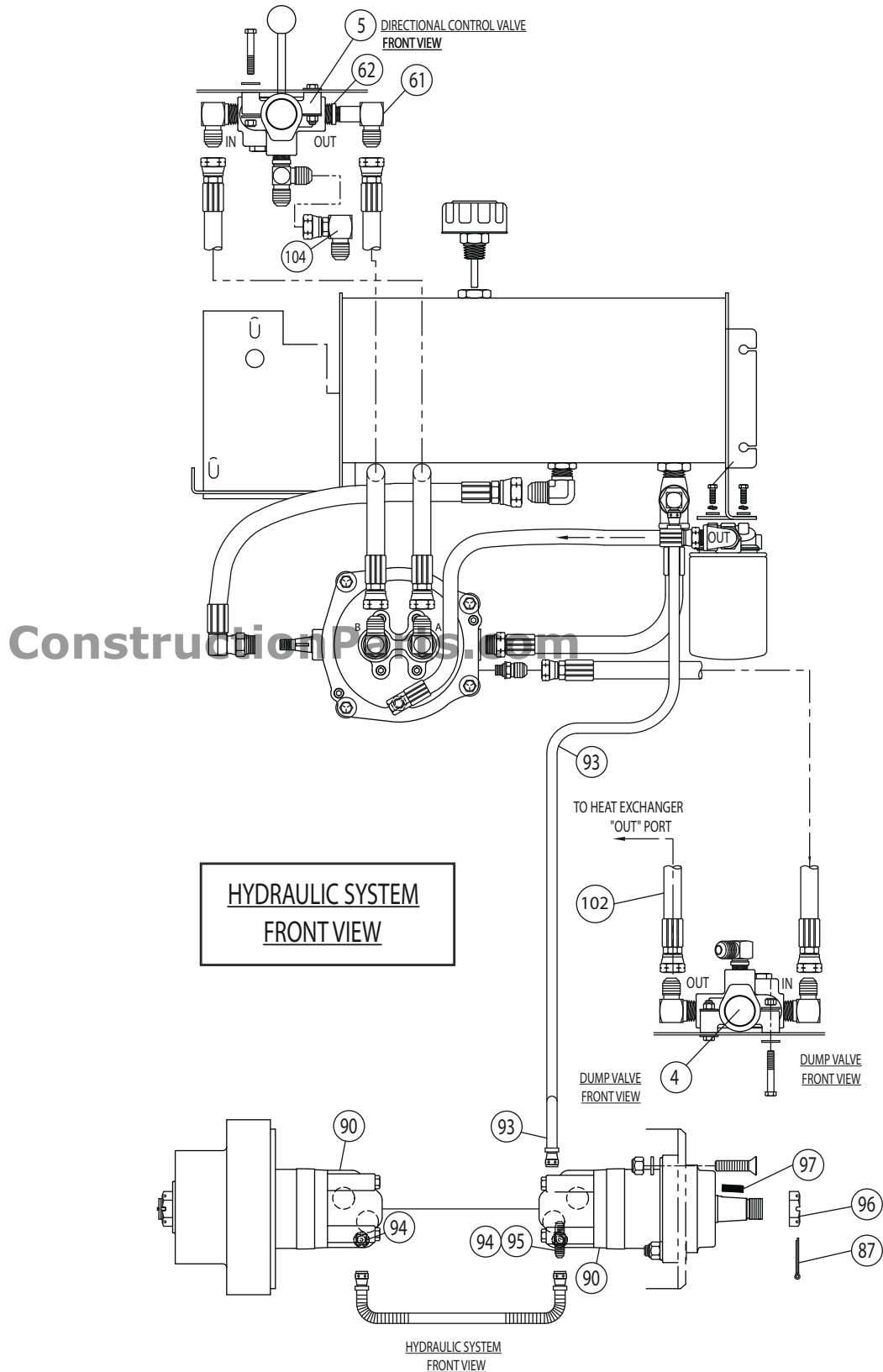
888-634-4289

TB-16 (HALF TRACK) HYDRAULIC SYSTEM

ConstructionParts.com 888-634-4289

HYDRAULIC SYSTEM GENERAL ARRANGEMENT (1 OF 3)

refer to page 29 for parts listing



refer to page 29 for parts listing

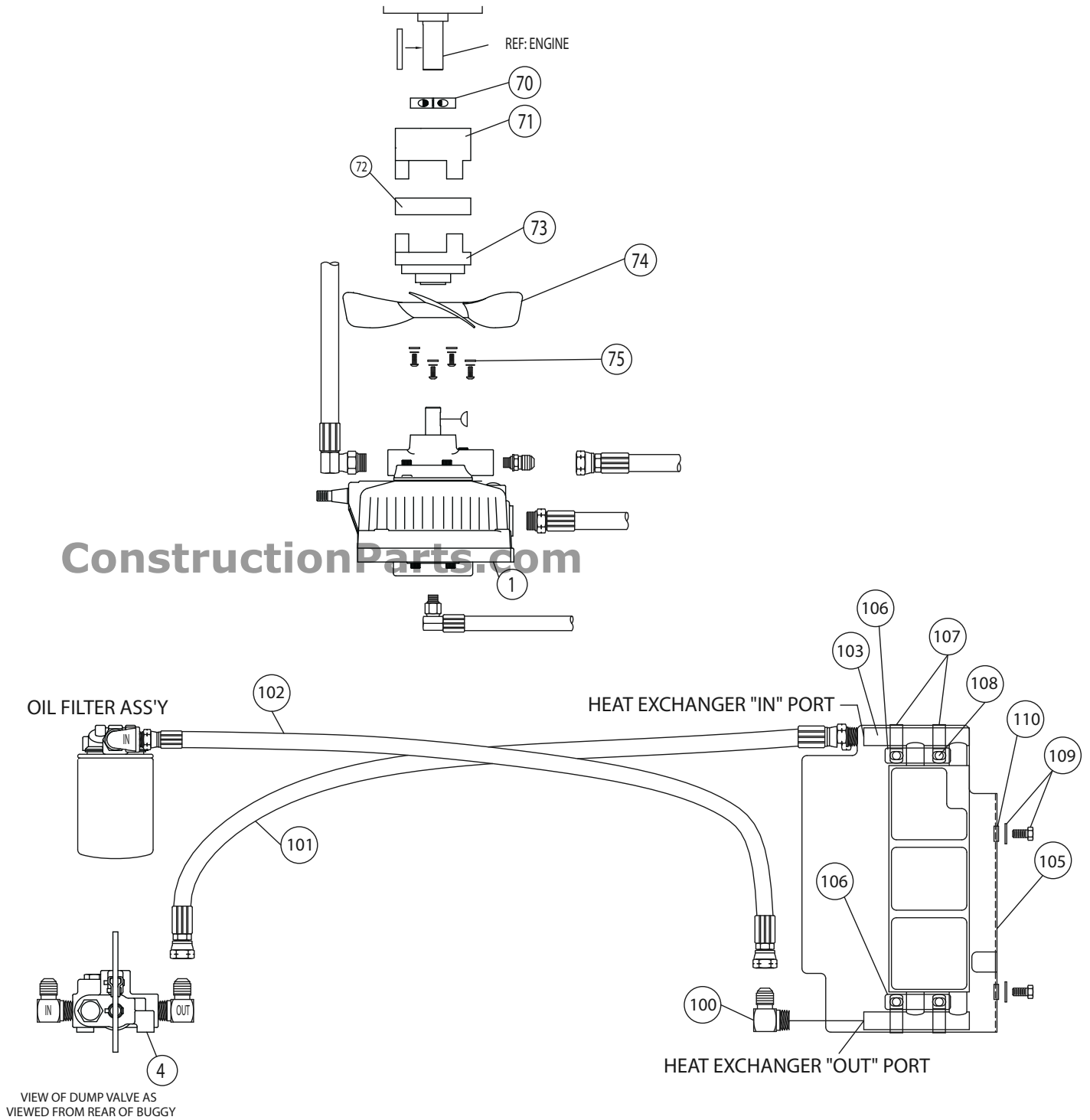


TB-16 (HALF TRACK) HYDRAULIC SYSTEM

ConstructionParts.com 888-634-4289

HYDRAULIC SYSTEM GENERAL ARRANGEMENT (3 OF 3)

refer to page 29 for parts listing

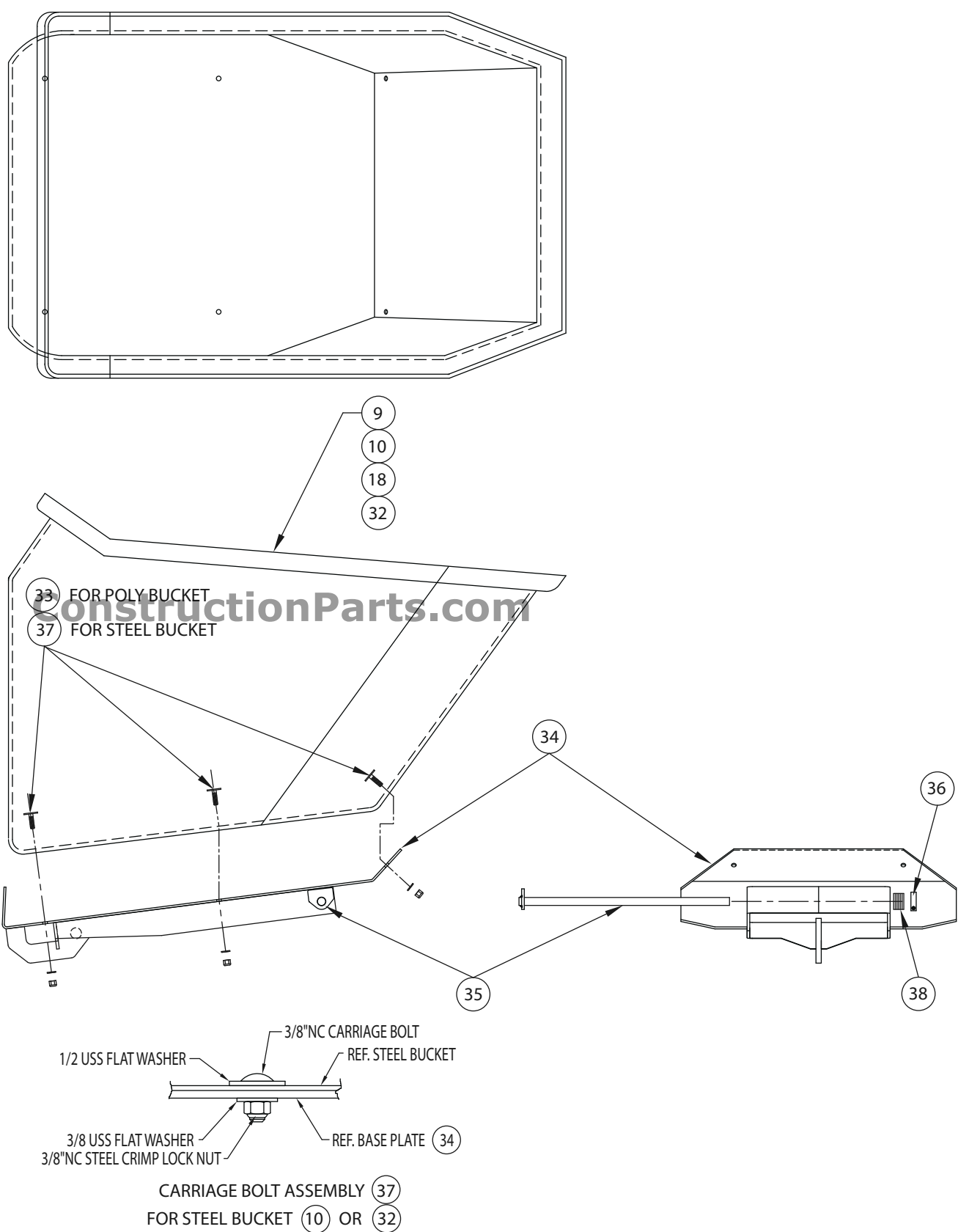


TB-16 (HALF TRACK) HYDRAULIC SYSTEM PARTS LISTING

Refer to the Parts listing on pages 23 and 24 for Hydraulic Parts Common to all Models.

ITEM	QTY	PART #	DESCRIPTION
1	1	HM0500	Hydrostatic Pump
3	1	HM0700	Hydraulic Cylinder x 2" Diameter Bore.
4	1	HM0800	Dump Valve
5	1	HM0900	Directional Control Valve
61	1	42103-61	90° Male Elbow, Long
62	1	42103-62	Steel Hex Reducer Pipe Bushing
70	1	42303-16	Clamping Collar.
71	1	42123-04	Engine Side Coupling Half.
72	1	42123-06	Spider Jaw Element.
73	1	42123-05	Pump Side Coupling Half.
74	1	42123-01	Transmission Fan.
75	4	42123-03	Bolt Assembly. #10-24 American Standard Hex Socket Button Head Cap Screw x ½" long with External Star Lock Washer and #10 Flat Washer. For Transmission Fan
87	2	42103-87	Wheel Motor Cotter Pin. 5/32" x 2" long Steel Plated Cotter Pin.
90	2	42103-90	Wheel Motor with 7/16" Square X 1-1/4" Lg. Key
91	2	42103-91	69" long Hose Assembly
92	2	42103-92	65" long Hose Assembly
93	1	42103-93	47" long Hose Assembly with Spring Guard
94	2	42103-94	Straight Thread "O" Ring Connector
95	1	42103-95	Swivel Nut, Straight Thread "O" Ring Branch Tee
96	2	42103-96	Wheel Motor Castle Nut. 1-1/4"-18 Threads per inch
97	2	42103-97	Wheel Motor Key. 7/16" Square x 1-1/4" long
100	1	FG3900	90° Male Elbow
101	1	42302-21	32" long Hose Assembly
102	1	42103-102	27" long Hose Assembly
103	1	42103-103	Hydraulic Oil Cooler
104	1	42302-33	Swivel Nut 90° Elbow
105	1	42103-105	Mounting Bracket
106	2	42103-106	Spacer Bar
107	4	42103-107	Loom Clamp
108	4	42103-108	¼"NC-20 HHCS x ¾" Long with USS Flat Washer, Lock Nut.
109	2	42103-109	3/8"NC-16 HHCS x ¾" Long with USS Flat Washer
110	2	42103-110	3/8"NC-16 Cage Nut

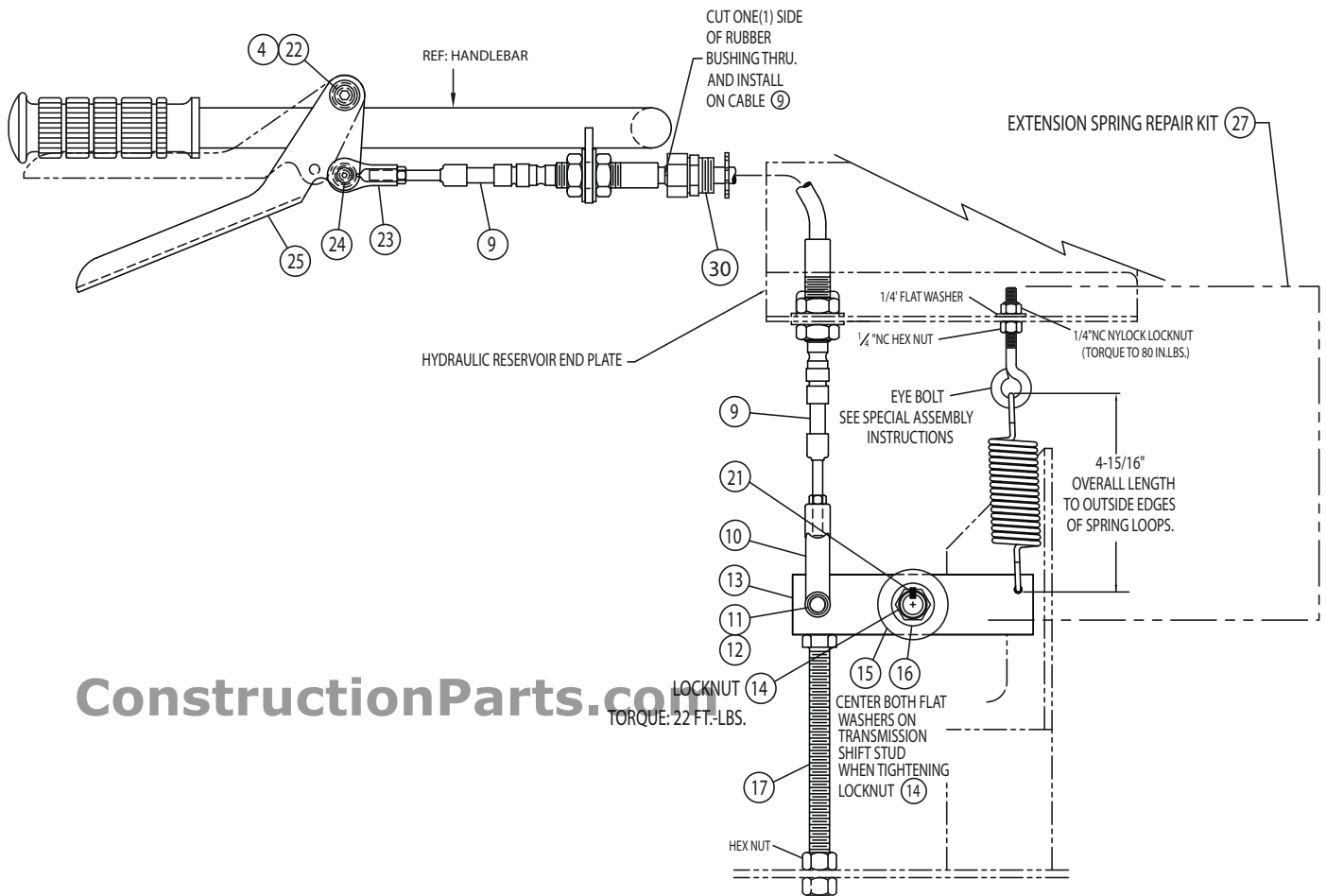
BUCKET AND BASE PLATE ASSEMBLY
ConstructionParts.com 888-634-4289



BUCKET AND BASE PLATE ASSEMBLY PARTS LISTING**ConstructionParts.com 888-634-4289**

ITEM	QTY	PART#	DESCRIPTION
9	1	42106-03	16 Cubic Foot Poly Bucket - B16/TB16
10	1	42105-01	16 Cubic Foot Steel Bucket - B16/TB16
18	1	42122-01	21 Cubic Foot Poly Bucket - B21
32	1	42121-08	21 Cubic Foot Steel Bucket - B21
33	6	42106-02	Elevator Bolt Assembly for Poly Buckets 3/8" NC Elevator Bolt x 1-1/2" Long with 3/8" SAE Flat Washer and 3/8" NC Nylock Locknut.
34	1	42110-02	Bucket Base Plate
35	1	42110-11	Pivot Pin
36	1	42110-16	Clamping Collar
37	6	42105-10	Carriage Bolt Assembly for Steel Buckets. 3/8" NC Carriage Bolt x 1" Long with 1/2" USS Flat Washer, 3/8" USS Flat Washer and 3/8"NC Steel Crimp Locknut.
38	6	42110-17	Washer Spacer. 3/4" SAE Flat Washer Discontinued 09/08

ConstructionParts.com**ConstructionParts.com****888-634-4289**



TRAVEL SPEED CONTROL PARTS LISTING

ConstructionParts.com

888-634-4289

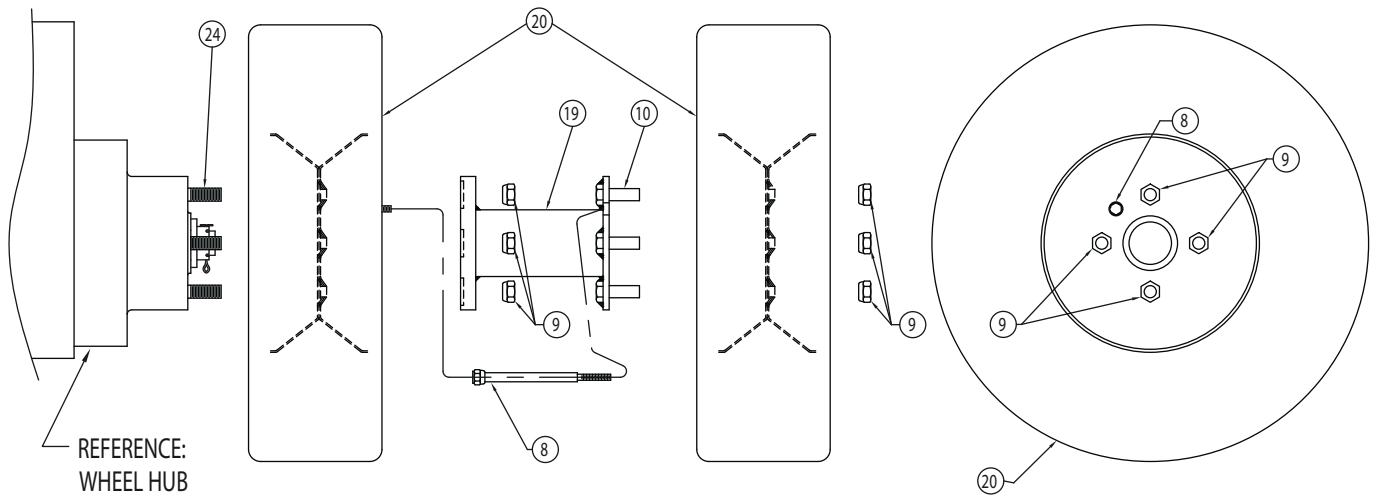
ITEM	QTY	PART #	DESCRIPTION
4	1	42107-04	Shoulder Bolt with Nylock Lock Nut
9	1	CT0900	Shift Cable
10	1	MS2500	Adjustable Yoke End
11	1	42107-11	Clevis Pin
12	1	42107-12	Plated Cotter Pin ($\frac{3}{32}$ " x $\frac{3}{4}$ ")
13	1	42107-13	Transmission Shift Bar
14	1	42107-14	$\frac{1}{2}$ " NC Steel Lock Nut
15	1	42107-15	$\frac{5}{8}$ " USS Flat Washer
16	1	42107-16	$\frac{1}{2}$ " SAE Flat Washer
17	1	42107-17	Neutral Stop Bolt With Hex Nut
21	1	42107-21	$\frac{1}{8}$ " x $\frac{5}{8}$ " Woodruff Key
22	2	42107-22	$\frac{3}{8}$ " SAE Flat Washer
23	1	42107-23	Tie Rod End
24	1	42107-24	Shoulder Bolt with Nylock Lock Nut
25	1	42107-25	Travel Speed Control Lever
27	1	42107-27	<p>Extension Spring Repair Kit Consists of: Extension Spring $\frac{1}{4}$" NC Eye Bolt $\frac{1}{4}$" USS Flat Washer $\frac{1}{4}$" NC Nylock Lock Nut</p> <p>Important Assembly Note:</p> <ol style="list-style-type: none"> 1) Adjust the Eye Bolt so the length of the Extension Spring is 4-15/16" from the outside edges of the end Spring Loops when the Transmission Shift Bar, item 13, is in the NEUTRAL position (against the Neutral Stop Bolt, item 17) as shown in the assembly drawing. 2) Then turn the Position the "Eye" of the Eye Bolt to line to with the top Spring Loop as shown in the assembly drawing. 3) After completion of steps 1-2, hold the Eye Bolt position and tighten the $\frac{1}{4}$" NC Nylock Lock Nut to 80 in.lbs.
30	1	42107-30	Metal Cord Grip



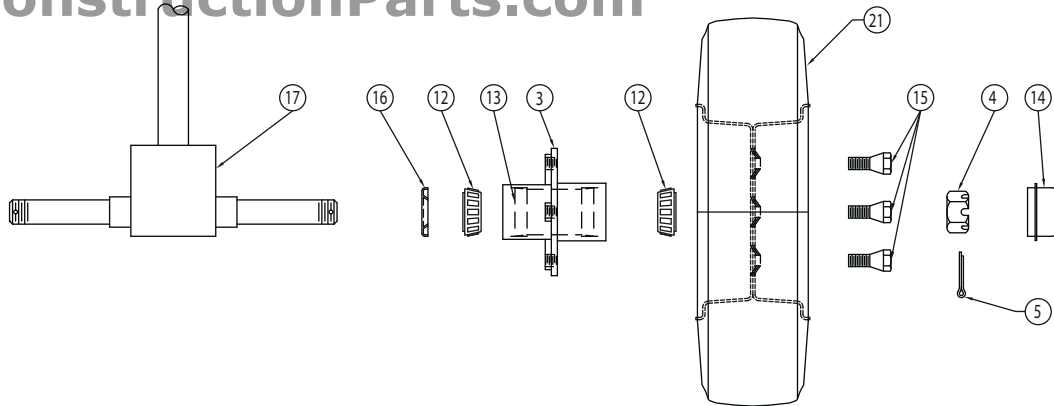
REPLACE ITEM 9 SHIFT CABLE AND ITEM 27 EXTENSION SPRING REPAIR KIT EVERY TWENTY-FOUR (24) MONTHS OF SERVICE.

ConstructionParts.com

888-634-4289



Drive/Front Wheel Assembly



Steering/Rear Wheel Assembly

WHEEL ASSEMBLIES PARTS LISTING

ConstructionParts.com **888-634-4289**

DRIVE/FRONT WHEEL ASSEMBLIES

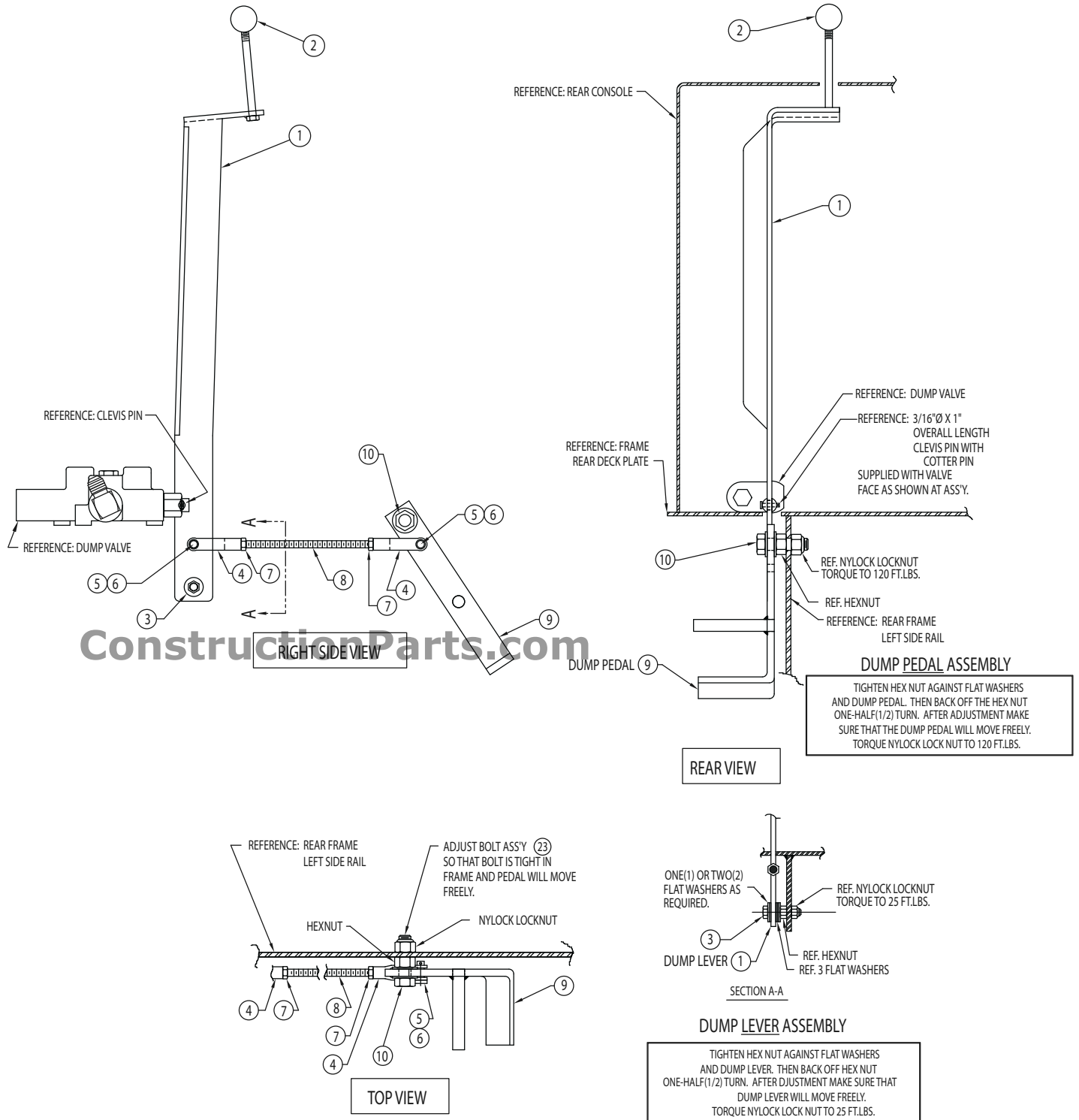
ITEM	QTY / Machine	PART #	DESCRIPTION
8	2	MS4000	Air Valve Extender. Discontinued March, 2002
9	16	42113-09	Cone Wheel Nut.
10	8	42116-05	Wheel Studs for Wheel Spacer, item 19.
19	2	42116-01	Wheel Spacer
20	4	42113-20	Foam Filled Drive Tire and Wheel Assembly
24	8	42101-63	Brake Hub Wheel Studs

STEERING/REAR WHEEL ASSEMBLIES

ITEM	QTY/ Machine	PART #	DESCRIPTION
3	2	42113-03	High Speed Hub Complete with Bearings, Grease Seal and Grease Cap
4	2	42113-04	Castle Nut.
5	2	42113-05	Cotter Pin (1/8" x 1 1/2")
12	4	42113-12	Roller Bearing Cone
13	4	42113-13	Roller Bearing Cup
14	2	42113-14	Grease Cap
15	8	42113-15	Wheel Bolts
16	2	42113-16	Grease Seal
17	1	32100-01	Steering Column
21	2	42113-21	Foam Filled Steering Tire and Wheel Assembly

CONSOLE MOUNTED DUMP LEVER ASSEMBLY

ConstructionParts.com 888-634-4289



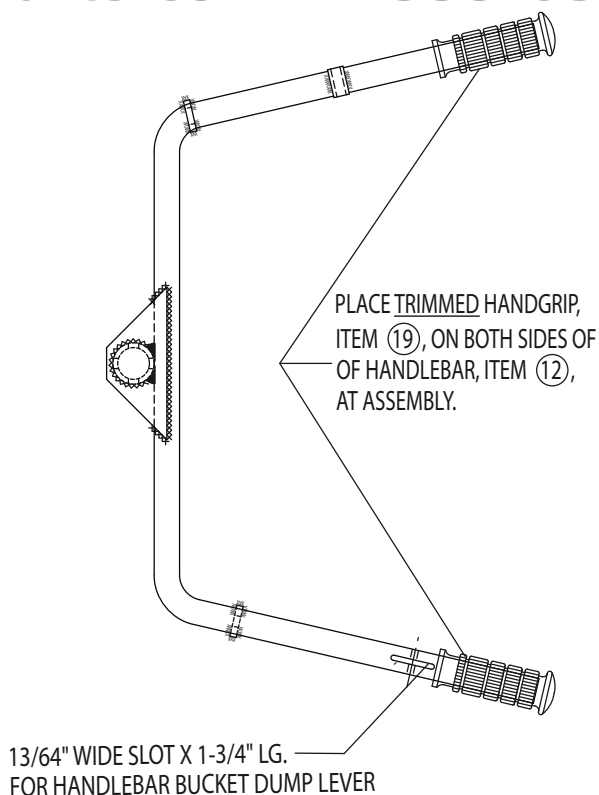
CONSOLE MOUNTED DUMP LEVER PARTS LISTING
ConstructionParts.com **888-634-4289**

ITEM	QTY	PART#	DESCRIPTION
1	1	42117-02	Dump Lever
2	1	MS2100	Plastic Ball Knob
3	1	42117-08	Bolt Assembly. 3/8" NC X 1-3/4" HHCS with 5 USS Flat Washers, 1 Hex Nut, and 1 Nylock Lock Nut.
4	2	42117-09	Yoke.
5	2	42107-11	Clevis Pin.
6	2	42117-11	Cotter Pin. 3/32" x 3/4" Long
7	2	42117-12	Hex Nut. 3/8" NF-24
8	1	42117-13	Dump Rod.
9	1	42117-17	Dump Pedal.
10	1	42117-23	Bolt Assembly. 5/8" NC x 2-1/4" HHCS with 2 SAE Flat Washers, 1 Hex Nut, and NyLock Lock Nut.

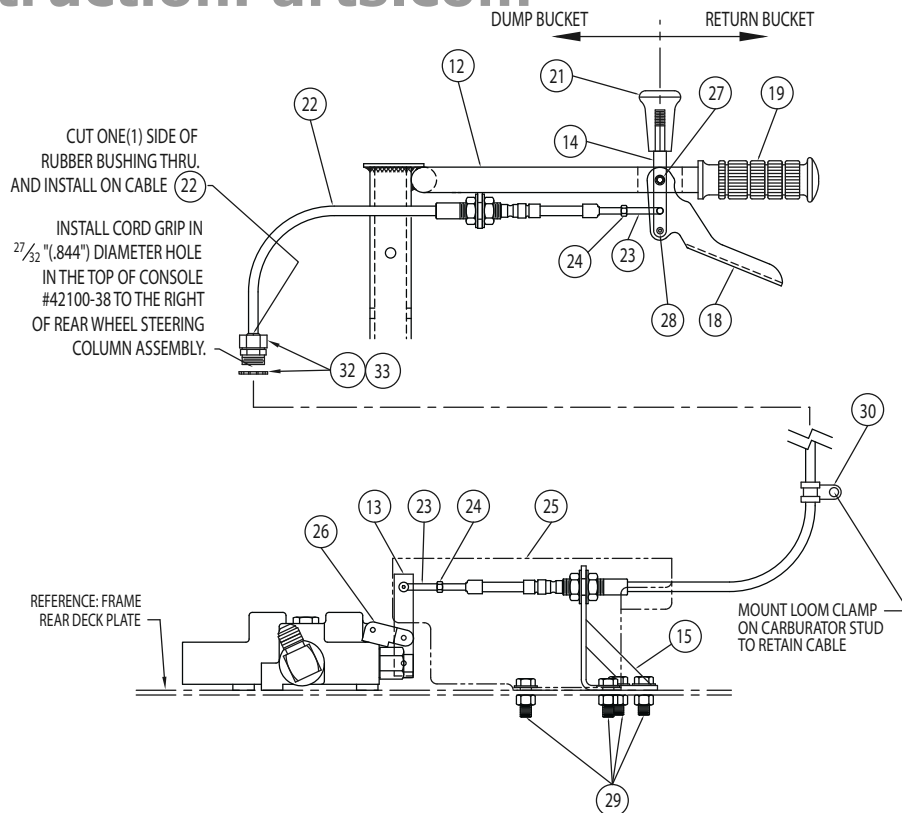
ConstructionParts.com

ConstructionParts.com **888-634-4289**

HANDLEBAR MOUNTED DUMP LEVER ASSEMBLY
ConstructionParts.com 888-634-4289



ConstructionParts.com



ConstructionParts.com

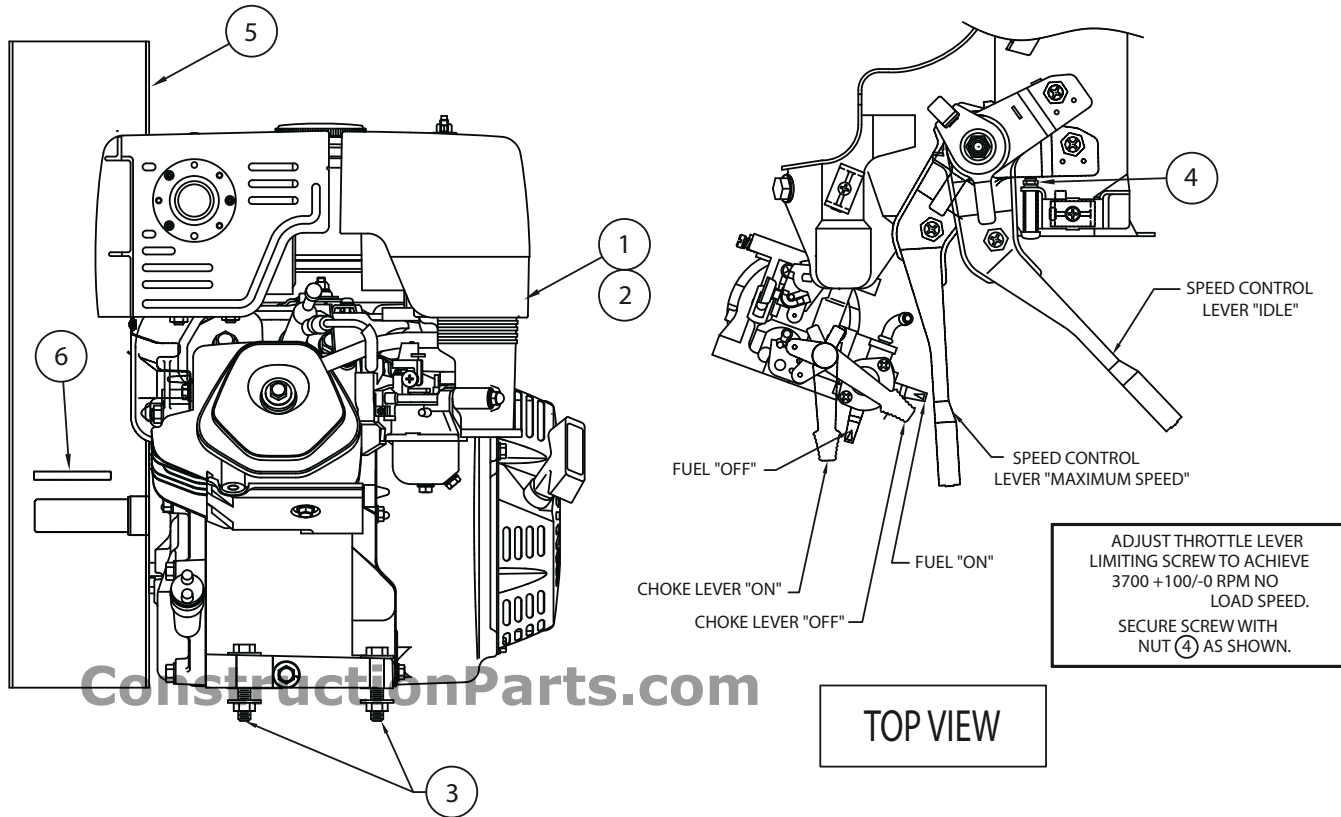
888-634-4289

HANDLEBAR MOUNTED DUMP LEVER PARTS LISTING

ConstructionParts.com **888-634-4289**

ITEM	QTY	PART#	DESCRIPTION
12	1	42126-12	Handlebar with Dump Mount
13	1	42126-13	Handlebar Dump Lever
14	1	42126-14	Dump Rod Lever without Knob
15	1	42126-15	Cable Mounting Bracket
18	1	42126-18	Dump Lever Pull Handle
19	2	42102-08	Handlebar Grip, Trimmed
21	1	42126-21	Dump Lever Knob
22	1	42126-22	Dump Cable
23	2	42126-23	Clevis with Pin
24	2	42126-24	Hex Nut. #10-32 UNF Plated
25	1	42126-25	Dump Cable Cover
26	1	42126-26	Valve Link Bracket Kit
27	1	42126-27	Bolt Assembly. 1/4" NC HHCS x 1-3/4" Long with 2 SAE Flat Washers, Steel Lock Nut.
28	1	42126-28	Bolt Assembly. 1/4" NC x 1-1/4" Long Shoulder Bolt with 10-24 Nylock Lock Nut.
29	5	42126-29	Bolt Assembly. 3/8" NC HHCS x 1-1/4" Long with SAE Flat Washer, Steel Crimp Lock Nut.
30	1	40120-27	3/8" I.D. Loom Clamp.
32	1	42126-32	Metal Cord Grip
33	1	42107-31	Stamped Steel Locknut

13 HP HONDA ENGINE WITH RECOIL START 13 HP HONDA ENGINE WITH ELECTRIC START AND RECOIL BACKUP FOR BUGGY MODEL B-16



ITEM	QTY	PART#	DESCRIPTION
1	1	EN0600	13 HP Honda Engine with Recoil Start
2	1	EN1700	13 HP Honda Engine with Electric Start with Recoil Backup
3	4	32103-02	3/8"NC HHCS x 1-3/4" Long with one(1) SAE Flat Washer, one(1) USS Flat Washer and one(1) Lock Nut.
4	1	45048-05	Throttle Stop Bolt Retaining Nut. M5 x 0.8 Hex Nut Plated. Metric
5	1	32103-15	Heat Shield
6	1	45048-06	Key. 1/4" Square x 1-3/4" Long

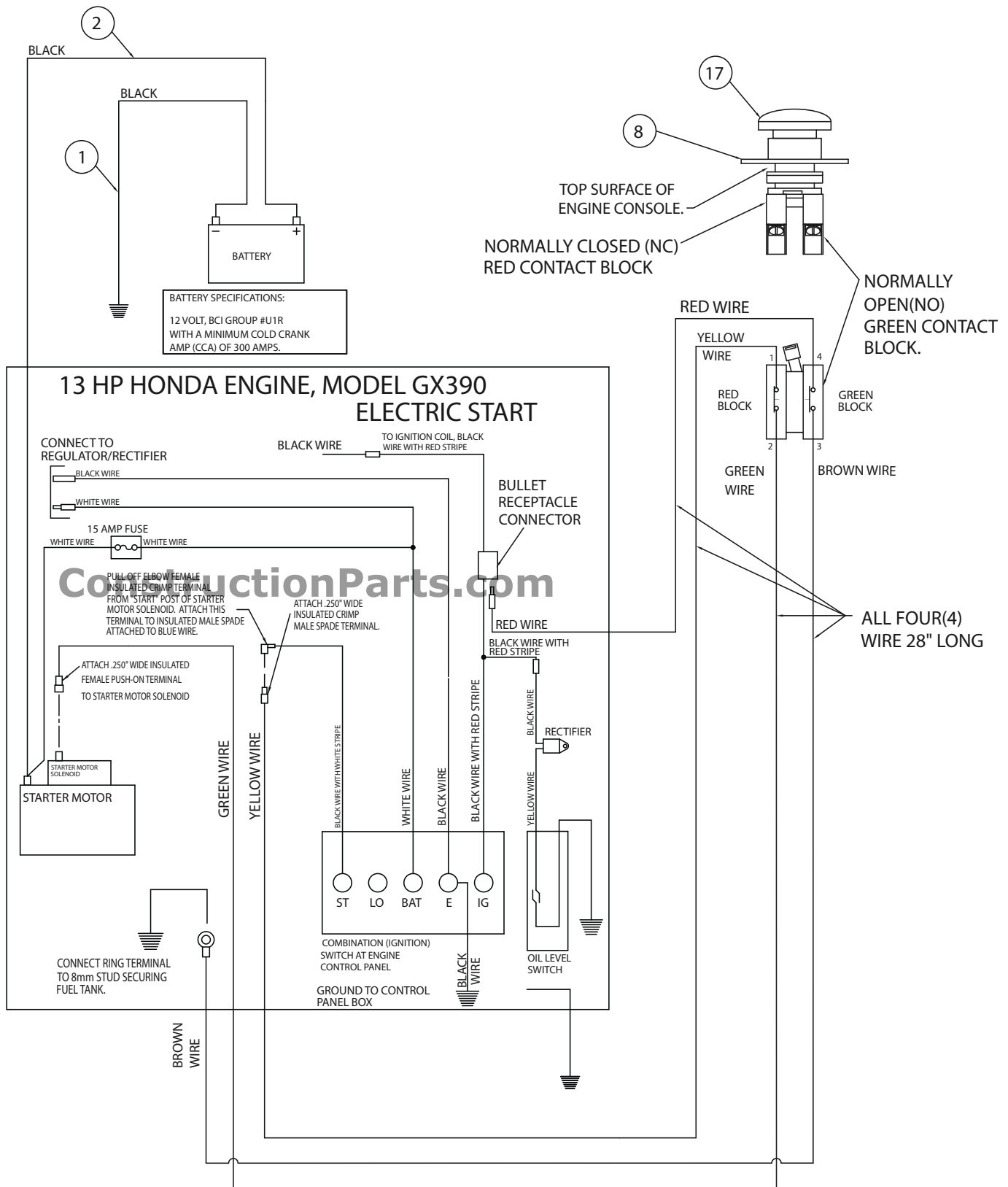
Construction WITH RECOIL START. 888-634-4289



ITEM	QTY	PART#	DESCRIPTION
7	1	45049-25	Emergency Stop Switch
8	1	48200-05	"Emergency Stop" Legend Plate

ELECTRICAL CIRCUIT FOR B-16 WITH 13 HP HONDA ENGINE

WITH ELECTRIC START WITH RECOIL BACKUP



**B-16 WITH 13 HP HONDA ELECTRIC START ENGINE WITH RECOIL BACKUP
ELECTRICAL PARTS LISTING**

ConstructionParts.com

888-634-4289

ITEM	QTY	PART#	DESCRIPTION
1	1	BF0200	Black Ground Cable x 10" Long
2	1	BF0100	Black Positive Cable x 36" Long
8	1	48200-05	"Emergency Stop" Legend Plate
17	1	45043-04	Emergency Stop Switch

ConstructionParts.com

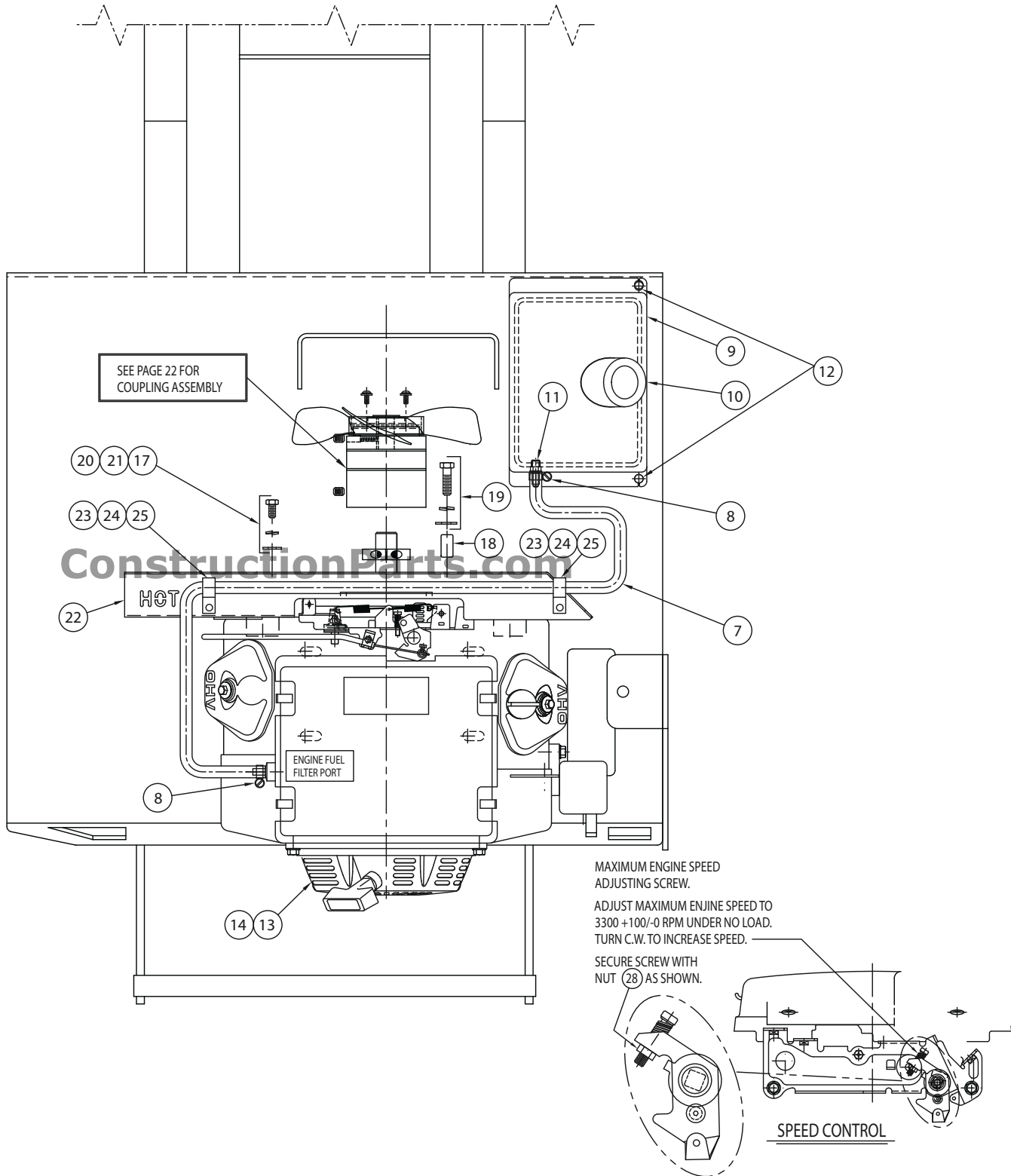
ConstructionParts.com

888-634-4289

20 HP HONDA ENGINE WITH ELECTRIC START AND RECOIL

ConstructionParts.com **BACKUP** 888-634-4289

FOR BUGGY MODELS B-21 AND TB-16



**B-21 AND TB-16 WITH 20 HP HONDA ELECTRIC START ENGINE WITH RECOIL
BACKUP PARTS LISTING**

ConstructionParts.com

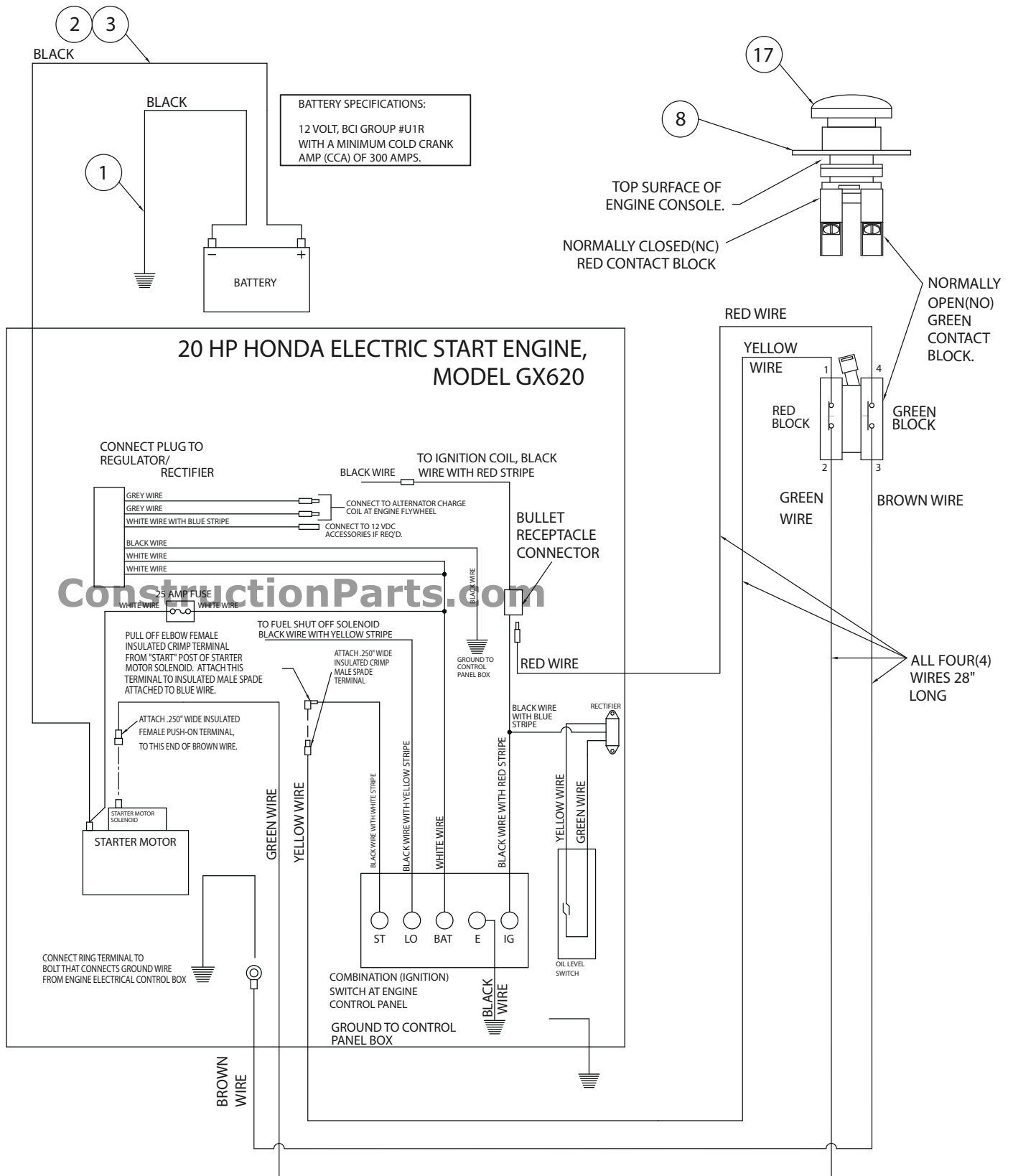
888-634-4289

ITEM	QTY	PART #	DESCRIPTION
7	1	42123-08	1/4" I.D. Fuel Hose x 52" Long
8	2	FG0400	1/2" I.D. Worm Type Hose Clamp
9	1	42123-10	Fuel Tank
10	1	42123-18	Fuel Cap
11	1	42123-22	Barbed Connector Fitting. Brass
12	2	42123-22	3/8" NC HHCS x 1" Long with two(2) USS Flat Washers and one(1) Lock Nut. For item 9
13	1	45320-09	20 HP Honda Engine with Electric Start and Recoil Backup (less Muffler Assembly and Oil Filter Extension Kit).
14	1	42124-02	Muffler Assembly for item 13.
17	1	42124-08	Bolt Assembly. 8mm/1.25 Pitch Thread HHCS x 16mm Long
18	1	42124-09	Pipe Coupling
19	1	42124-10	Bolt Assembly. 7/16" NC HHCS x 2" Long with USS Flat Washer, Split Lock Washer
20	1	42124-11	5/16" USS Flat Washer
21	1	42124-12	5/16" USS Lock Washer
22	1	42124-17	Heat Shield
23	2	42124-18	Bolt Assembly. 1/4" NC HHCS x 1-1/4" Long with Lock Nut.
24	2	42124-19	Pipe Coupling
25	2	40112-68	1/2" Loom Clamp
27	4	42124-14	Bolt Assembly. 3/8" NC HHCS x 2" Long with USS Flat Washer, Lock Nut. For attaching Engine to Buggy Frame. Not Shown.
28	1	42124-15	Throttle Stop Bolt Retaining Nut. M5 x 0.8 Hex Nut Plated. Metric

ConstructionParts.com

888-634-4289

ELECTRICAL CIRCUIT FOR B-21 AND TB-16 WITH 20 HP HONDA ENGINE WITH ELECTRIC START AND RECOIL BACKUP.



**B-21 AND TB-16 WITH 20HP HONDA ELECTRIC START ENGINE ELECTRICAL
PARTS LISTING**

ConstructionParts.com

888-634-4289

ITEM	QTY	PART#	DESCRIPTION
1	1	BF0200	Black Ground Cable x 10" Long
2	1	BF0100	Black Positive Cable x 36" Long
3	1	42125-07	Black, Split Convolute Loom x 32" Long for item #2 above.
8	1	48200-05	"Emergency Stop" Legend Plate
17	1	45043-04	Emergency Stop Switch

ConstructionParts.com

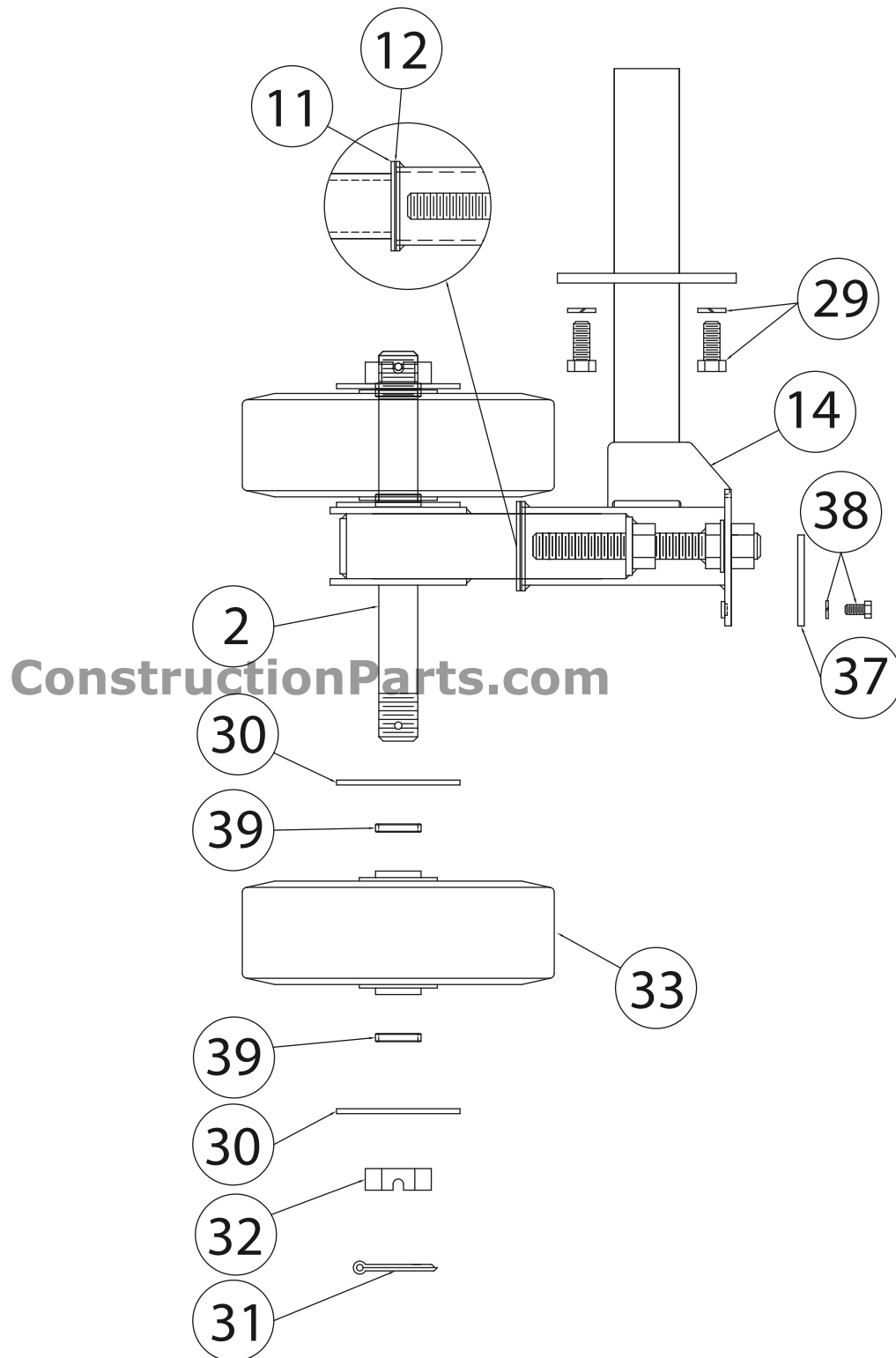
ConstructionParts.com

888-634-4289

TB16 TRACK ASSEMBLY

ConstructionParts.com Refer to page 50 for parts listing 888-634-4289

A. Idler Wheel Assembly



ConstructionParts.com

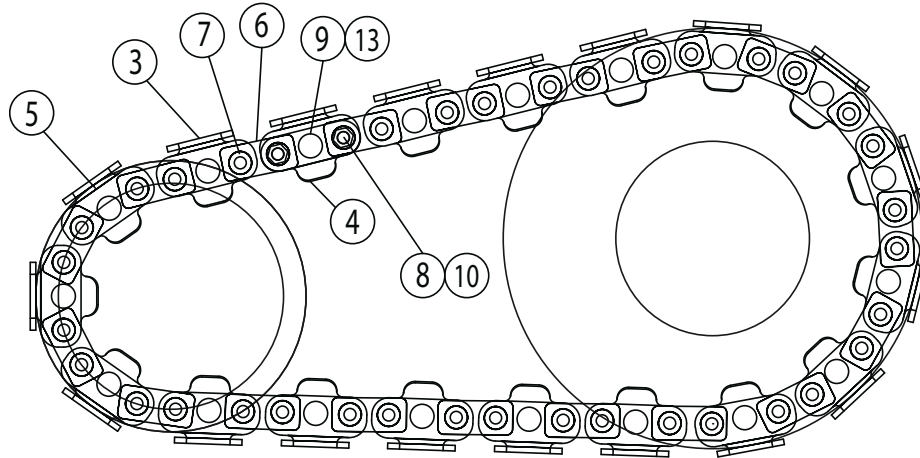
888-634-4289

TB16 TRACK ASSEMBLY (continued)

ConstructionParts.com

888-634-4289

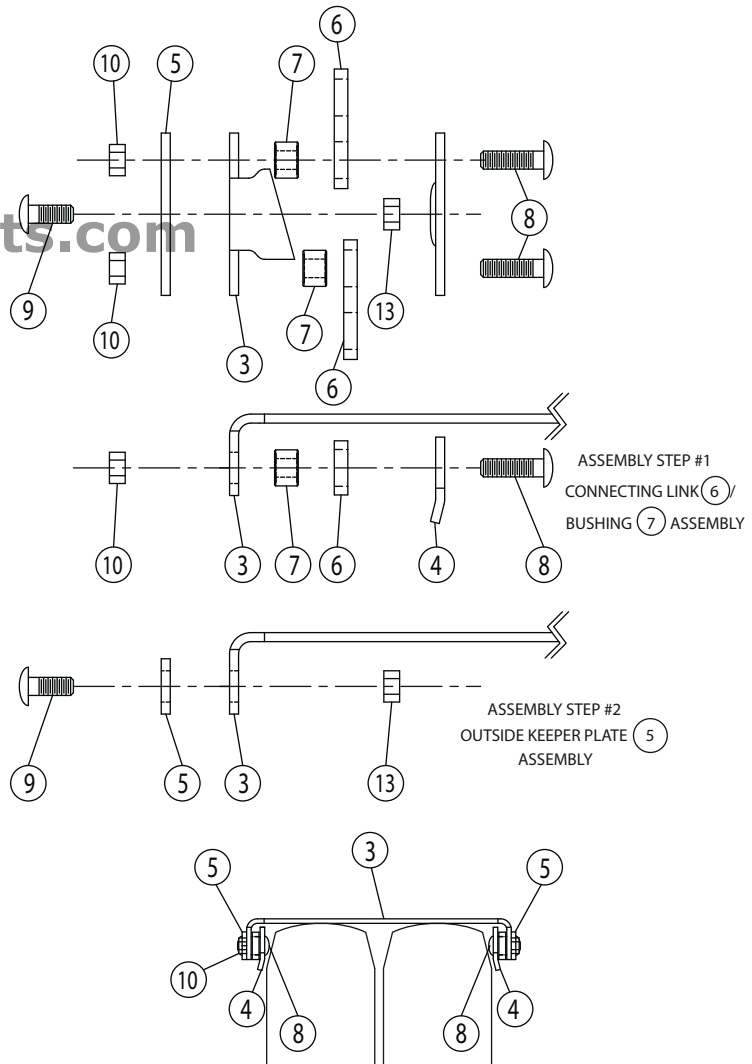
B. Track Assembly



C. Cleat Assembly

TRACK CLEAT ASSEMBLY SEQUENCE:

- 1) ASSEMBLE CONNECTING LINK (6), BUSHING (7), CARRIAGE BOLT (8), STEEL LOCKNUT (10) AS SHOWN, FOUR(4) PLACES PER CLEAT. TORQUE STEEL LOCKNUT TO 60 FT. LBS. THEN CONTINUE TIGHTENING NUT (10) UNTIL FLATS ON NUT LINE UP WITH HEX HOLE IN KEEPER PLATE.
- 2) ATTACH OUTSIDE KEEPER PLATE (5) TWO(2) PLACES PER CLEAT AS SHOWN. SECURE OUTSIDE KEEPER PLATE (5) WITH CARRIAGE BOLT (9) AND STEEL LOCK NUT (13). TORQUE TO 60 FT LBS.



ConstructionParts.com

888-634-4289

TB16 TRACK ASSEMBLY PARTS LISTING**ConstructionParts.com 888-634-4289**

ITEM	QTY	PART#	DESCRIPTION
2	1	42130-02	Rear Axle Support Tube
3	19	42127-03	Cleat
4	28	42127-04	Backer Plate
5	38	42127-05	Outside Keeper
6	38	42127-06	Connecting Link
7	76	42127-07	Bushing
8	76	42127-08	½" – 13 NC x 1 ½" Long Plated Carriage Bolt. Grade 5 Minimum.
9	38	42127-09	½" – 13 NC x 1" Long Plated Carriage Bolt. Grade 5 Minimum.
10	76	42127-10	½" 13 NC Plated Hex Nut. Grade 8 Minimum
11	1	42130-11	Seal Retaining Flange
12	1	42130-12	Rubber Seal
13	38	HW0001	½" NC Steel Lock Nut (42127-13)
14	1	42130-14	Adjusting Tube Weldment
29	2	42130-29	5/8" – 11 NC HHCS x 1 ½" Long with Split Steel Lock Washer
30	4	42130-30	Wheel Seal Cover
31	2	HW0001	¼" x 2 ½" Cotter Pin (42130-31)
32	2	42130-32	1 ½" – 6 NC x 27/32" Cad Plated Jam Nut
33	2	42130-33	Idler Wheel
37	1	42130-37	Tensioning Nut Keeper Plate
38	1	42130-38	3/8" – 18 NC HHCS x ¾" Long with Split Steel Lock Washer
39	2	42130-39	Wheel Bearing Spacer

ConstructionParts.com**888-634-4289**